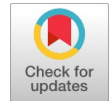


Classified Plant Al-Dhahiriya in the South of Palestine

Jehad Mahmoud Hussein Ighbareyeh



Abstract: We studied plant species of Dhahiriya in the period between January to October 2021, and January to Jun 2024, due to the importance of plants in that vital part of Palestine, which is located in southern Palestine, including that region's climate, and unique plants that represent of the Mediterranean region plants, North Africa, Sinai desert, Negev, Dead Sea, and Red Sea. It used the Braun-Blanquet (1979) method for the identification of plants. Moreover, Plants have been studied in Dhahiriya, located in southern Palestine. A total of 770 species from 70 families were identified, of which 86 (11.16%) are endemic. The plant families with the highest representation were Asteraceae (14.54%), Fabaceae (14%), Poaceae (7.41%), and Lamiaceae (5.19%). Regarding plant life forms, Therophytes account for 47%, Hemicryptophytes for 20.35%, Shrubs or Chamaephytes for 14.05%, and Trees or Phanerophytes for 9.05%, with a notable increase in spring.

Keywords: Botany, life form, plant taxa, Taxonomy, Palestine, Al-Dhahiriya.

I. INTRODUCTION

The first volume on plants was published in Palestine in 1966 [1, 2]. Still, many changes took place in the different plant species, over decades, during which a radical change in the life and distribution of plants, resulting from human activities, and bioclimate factors [3, 4, 5], the topography of the region Palestine, and to know the varieties of plants for an important geographical area in southern Palestine, because of its unique plant species, additionally, Dhahiriya is situated near the Sinai Desert, Negev, Red Sea, and Dead Sea. The extension of its fertile vegetation as a part of the highlands of the mountains of Palestine and the occupied Palestinian coast strongly motivated us to know and identify varieties of plants for this region. About 2,750 species of wild plants have been identified and described in historical Palestine within 138 families, and the number of plant species endemic to Palestine is estimated at 261 species, 53 of which are very rare [6]. There are a few studies in which flora has been studied in the south of Palestine, such as [7-9], Negev [10], and regionally such as Sinai [11-14], Lebanon, Jordan, Syria, and Egypt [15].

On the other hand, many scientists and researchers have studied many plants in the Mediterranean region, which consider the plants of Palestine as part of this region [7, 8, 16, 17, 18, 19, 20, 21, 22] [31]. The purpose of the present study is to determine plant species of the Al-Dhahiriya region in Palestine.

II. METHODOLOGY

A. Study Area

Al-Dhahiriya (Al-Zahiriya) is one of the Palestinian cities located within the Hebron Governorate, located 23 km southwest of the Hebron city (Figure 1). It has an elevation of about 655 m above sea level with coordinates (31° 24'28N 34°58'20E) and an area is 98 (37.8 square miles) Km², Al-Zahiriya arose above the site of the Canaanite town of Goshen, which may mean "earth mound" (and some residents of the town interpret it as "post"). On the other side, it was called Al-Zahiriya after the Mamluk leader Al-Zahir Baybars, who fortified it to fight the Crusaders, according to the local tradition of the people, and supported by archaeology have that Al-Dhahiriya was founded by Baibars (1223/1228 – 1277) [23], also it was surrounded by the lands of Al-Samu and the Dead Sea to the east, Dura to the north, the district of Beersheba, Sinai desert and the Red Sea to the south and the Mediterranean region to the west.

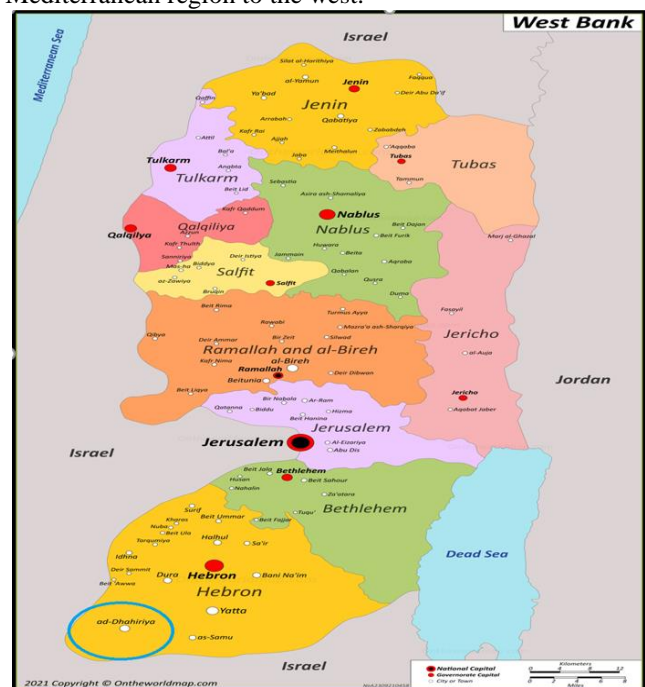


Fig. 1. Location of Dhahiriya Region (In Circle Blue) in Palestine

Manuscript received on 02 September 2024 | Revised Manuscript received on 19 September 2024 | Manuscript Accepted on 15 October 2024 | Manuscript published on 30 October 2024.

* Correspondence Author (s)

Jehad Mahmoud Hussien Ighbareyeh*, Department of Plant Production and Protection, Faculty of Agriculture, Al-Quds Open University, Hebron Branch, Abu Ktallah Street, Hebron City (Palestine), West Asia. Email ID: jighbareyeh@qou.edu, ORCID ID: [0009-0008-1558-7429](https://orcid.org/0009-0008-1558-7429)

© The Authors. Published by Lattice Science Publication (LSP). This is an open access article under the CC-BY-NC-ND license (<http://creativecommons.org/licenses/by-nc-nd/4.0/>)

B. Data Collection and Vegetation

About 230 samples of different plants were selected from the Al-Zahiriya region, including a group of Al-Khrab that contain archaeological sites, the most important of which are: Kafr Gul, Al Ras, Deir Al-Louz, Umm Sir, Al-Rahwa, Al-Jabari, Asila, Badgush, Jawy, Deir Al-Haw, Deir Saida, Attir, Al-Tal, Tal Arad, Takhana, Rajoum, Beit al-Qasr, Umm Nakhla, Umm al-Amad, Al-Rabieh, Khirbet Zanouta, Khirbet Omdimneh, Khirbet Tatrit in addition to many small inhabited villages affiliated to Al-Dhahiriya, the most important of which are: Douma and Shweika, Annab (small and large), Doha, Al-Bereh, Al-deer and others, as in the (Figure 2).



Fig. 2. Represents Some Villages and Towns in Hebron Governorate, Including Al-Dahiriya, in which the Study was Conducted

C. Data Analysis

Moreover, more than 230 plant samples were studied for Al-Zahiriya during the spring and summer of 2021, and January to Jun 2024, and it included herbaceous, forest, steppe, scrubland, and other plants. The Braun-Blanquet [24] [25] (1979) method was used to classify various plants, as more than 770 plant species were found, as shown in (Table 1), where the number is indicated (5: when the variety covers more than 75-100% of the area; 4: when the number of individuals covers 50-75% of the area; 3: when several individuals cover 25-50% of the area; 2: When the plant covers at least 5-25% of the area; 1: when the species has a small coverage value, <5%; and +: when the species is sparsely present as a very small cover, >5% of the area). On the other side, we found a few plants in the southern areas of Palestine [3, 4, 5, 9] [26,27][28][29][30] and neighboring Egypt, Beersheba, and the Sinai desert which are connected with the area study.

Table 1. Varieties of Plants Were Studied in the Dhahiriya Region

Species	Life form	Status	Family	Habitat	Pollinization
Aaronsohnia factorovskyi Warb. & Eig.	A	Na	Compositae	D, Sd	An
Abutilon indicum (L.) Sw.	Cm	Na	Malvaceae	D, Sd	An
Abutilon fruticosum Guill. & Perr.	Cm	Na	Malvaceae	D, Sd	An
Abutilon hirtum (Lam.) Sweet.	Cm	Na	Malvaceae	Sd	An
Abutilon pannosum (G. Forst.) Schldt.	Phs	Na	Malvaceae	Sd	An
Abutilon theophrasti Medik	A	Na	Malvaceae	Mid	An
Acacia raddiana Savi.	Tr	Na	Leguminosae	Xd	An
Acacia tortilis (Forssk.) Hayne	Tr	Na	Leguminosae	Xd	An
Acacia saligna (Labill.) Wendl. f.	Tr	Na	Leguminosae	Mid, T	An
Acacia farnesiana (L.) Willd.	Tr	Na	Leguminosae	Mid	An
Acanthus syriacus Boiss.	Hm	Na	Acanthaceae	Mid	An
Achillea aleppica DC.	Cm	Na	Compositae	T	An
Achillea arabica Kotschy	Hm	Na	Compositae	Mid, T	An
Achillea fragrantissima Forssk. Sch.Bip.	Hm	Na	Compositae	D, Xd	An
Achillea cretica L.	Hm	Na	Compositae	D	An
Achyranthes aspera L.	Hm	Na	Amaranthaceae	Mid, D	An
Adiantum capillus- veneris L.	Hm	Na	Pteridaceae	Mid, T, D, Xd	Fer
Adonis microcarpa DC.	A	Na	Ranunculaceae	Mid, T	An
Adonis dentata Del.	A	Na	Ranunculaceae	T, D	An

<i>Aegilops bicornis</i> (Forssk.) Jaub. & Spach	A	Na	Poaceae	T, D	Wi
<i>Adonis aestivalis</i> L.	A	Na	Ranunculaceae	Mid, T, D	An
<i>Aegilops crassa</i> Boiss.	A	Na	Poaceae	D	Wi
<i>Aegilops lorentii</i> Hochst.	A	Na	Poaceae	Mid, T	Wi
<i>Aegilops kotschy</i> Boiss.	A	Na	Poaceae	D, Xd	Wi
<i>Aegilops longissima</i> Schweinf. & Muschl.	A	Na	Poaceae	Mid, T	Wi
<i>Aegilops searsii</i> Feldman & Kislev	A	Na	Poaceae	T	Wi
<i>Aegilops peregrina</i> (Hack.) Maire & Weiller	A	Na	Poaceae	Mid, T	Wi
<i>Aegilops geniculata</i> Roth.	A	Na	Poaceae	Mid, T, D	Wi
<i>Aegilops triuncialis</i> L.	A	Na	Poaceae	T	Wi
<i>Aeluropus littoralis</i> (Gouan) Parl.	Hm	Na	Poaceae	Mid, D, Xd	Wi
<i>Aeluropus lagopoides</i> (L.) Thwaites	Hm	Na	Poaceae	T, D, Xd	Wi
<i>Aerva javanica</i> (Burm.f.) Juss. ex Schult.	Cm	Na	Poaceae	D, Xd	Wi
<i>Ailanthus altissima</i> (Mill.) Swingle	Tr	Na	Simarubaceae	Mid, T	An
<i>Ainsworthia cordata</i> (Jacq.) Boiss.	A	E	Apiaceae	Mid, T	An
<i>Ainsworthia trachycarpa</i> Boiss.	A	Na	Apiaceae	Mid, T	An
<i>Aizoon hispanicum</i> L.	A	Na	Aizoaceae	T, D, Xd	An
<i>Aizoon canariense</i> L.	A	Na	Aizoaceae	D, Xd	An
<i>Ajuga orientalis</i> L.	Hm	Na	Lamiaceae	Mid, T	An
<i>Ajuga iva</i> (L.) Schreber	Cm	Na	Lamiaceae	T	An
<i>Ajuga chamaepitys</i> (L.) Schreber	Hm	Na	Lamiaceae	Mid, T, D	An
<i>Alcea acaulis</i> (Cav.) Alef.	Cm	Na	Malvaceae	Mid, T, D	An
<i>Alcea setosa</i> (Boiss.) Alef.	Hm	Na	Malvaceae	Mid, T	An
<i>Alcea galilaea</i> Zohary	Hm	E	Malvaceae	Mid, T	An
<i>Alcea striata</i> (DC.) Alef.	Hm	Na	Malvaceae	Sd	An
<i>Alcea digitata</i> Alef.	Hm	Na	Malvaceae	Mid, T	An
<i>Alhagi maurorum</i> Medik.	Hm	Na	Leguminosae	Mid, T, D, ED	An
<i>Alkanna tinctoria</i> (L.) Tausch	Cm	Na	Boraginaceae	Mid, T	An
<i>Alkanna strigosa</i> Boiss. & Hohen.	Cm	Na	Boraginaceae	Mid, T	An
<i>Alkanna orientalis</i> (L.) Boiss.	Cm	Na	Boraginaceae	Mid, D	An
<i>Allium ascalonicum</i> L. (<i>Allium hierochuntinum</i> Boiss.)	G	E	Amaryllidaceae	T	An
<i>Allium artemisietorum</i> Eig. & Feinbr.	G	Na	Amaryllidaceae	D, Xd	An
<i>Allium curtum</i> Boiss. & Gaill.	G	Na	Amaryllidaceae	Mid, T, D	An
<i>Allium aschersonianum</i> Barbey	G	Na	Amaryllidaceae	T, D	An
<i>Allium ampeloprasum</i> L.	G	Na	Amaryllidaceae	Mid, T	An
<i>Allium daninianum</i> Brullo, Pavone & Salmeri	G	E	Amaryllidaceae	Mid, T	An
<i>Allium decaisnei</i> C. Presl	G	Na	Amaryllidaceae	D	An
<i>Allium desertorum</i> Forssk.	G	Na	Amaryllidaceae	D, Xd	An
<i>Allium dictyoprasum</i> C. A. Meyer ex Kunth	G	Na	Amaryllidaceae	T, D	An
<i>Allium erdelii</i> Zucc.	G	Na	Amaryllidaceae	Mid, T	An
<i>Allium negevense</i> Kollmann	G	E	Amaryllidaceae	D	An
<i>Allium orientale</i> Boiss.	G	Na	Amaryllidaceae	T	An
<i>Allium pallens</i> L.	G	Na	Amaryllidaceae	Mid, T, D	An
<i>Allium paniculatum</i> L. sub.	G	Na	Amaryllidaceae	Mid, T	An
<i>Allium papillare</i> Boiss.	G	E	Amaryllidaceae	D	An
<i>Allium qasyunense</i> Mouterde	G	E	Amaryllidaceae	T	An
<i>Allium rothii</i> Zucc.	G	Na	Amaryllidaceae	D	An
<i>Allium truncatum</i> (Feinbr.) Kollmann & D. Zohary	G	Na	Amaryllidaceae	Mid, T	An
<i>Alyssum damascenum</i> Boiss. et Gaill	A	Na	Brassicaceae	T, D	An
<i>Althaea ludwigii</i> L.	A	Na	Malvaceae	Sd, Xd	An
<i>Althaea hirsuta</i> L.	A	Na	Malvaceae	Mid	An
<i>Alyssum simplex</i> Rudolph	A	Na	Brassicaceae	Mid, T	An
<i>Alyssum szovitsianum</i> Fisch. & C.A.Mey.	A	Na	Brassicaceae	Mid	An
<i>Alyssum strigosum</i> Banks & Sol.	A	Na	Brassicaceae	Mid, T	An
<i>Amaranthus graecizans</i> L.	A	Na	Amaranthaceae	Mid, T, D, Xd	Wi
<i>Amaranthus viridis</i> L.	A	Na	Amaranthaceae	Mid, T, D, Xd	Wi
<i>Ammi majus</i> L.	A	Na	Apiaceae	Mid, T	An
<i>Ammi visnaga</i> (L.) Lam.	A	Na	Apiaceae	Mid	An
<i>Ammochloa palaestina</i> Boiss.	A	E	Poaceae	T, D	Wi
<i>Anabasis syriaca</i> Iljin	Cm	Na	Amaranthaceae	D, Xd	Wi
<i>Anabasis setifera</i> Moq.	Cm	Na	Amaranthaceae	D, Xd	Wi
<i>Anabasis articulata</i> (Forsk.) Moq.	Cm	Na	Amaranthaceae	D, Xd	Wi
<i>Anacyclus radiatus</i> Loisel.	A	Na	Compositae	Mid	An
<i>Anagyris foetida</i> L.	Phs	Na	Leguminosae	Mid, T	An

Classified Plant Al-Dhahiriya in the South of Palestine

Anagallis arvensis L.	A	Na	Primulaceae	Mid, T, D, Xd	An
Anarrhinum forskahlil (J.F. Gmel.) Cuf.	Cm	Na	Plantaginaceae	Mid, T	An
Anastatica hierochuntica L.	A	Na	Brassicaceae	Xd	An
Anchusa azurea Miller	Hm	Na	Boraginaceae	Mid	An
Anchusa strigosa Banks & Sol.	Hm	Na	Boraginaceae	Mid, T	An
Anchusa milleri Lam. ex. Spreng.	A	Na	Boraginaceae	D, XD	An
Anchusa aegyptiaca (L.) DC.	A	Na	Boraginaceae	Mid, T, D	An
Anchusa undulata L.	Hm	Na	Boraginaceae	Mid	An
Andrachne telephioides L.	Hm	Na	Phyllanthaceae	Mid, T, D	An
Andrachne aspera Spreng.	Cm	Na	Phyllanthaceae	Xd	An
Androcymbium palaestinum Baker	G	E	Colchicaceae	T, D, Xd	An
Androsace maxima L.	A	Na	Primulaceae	Mid, T, D	An
Anemone coronaria L.	G	Na	Ranunculaceae	Mid, T, D	An
Anethum graveolens L.	A	Na	Apiaceae	Mid	An
Ankyropetalum gypsophiloides Fenzl	Cm	Na	Caryophyllaceae	Mid, T, D	An
Anthemis bommuelleri Stoj. & Acht.	A	Na	Compositae	Mid	An
Anthemis cornucopiae Boiss.	A	Na	Compositae	Mid	An
Anthemis eliezrae Eig.	A	Na	Compositae	D	An
Anthemis philistea Boiss	A	E	Compositae	Mid	An
Anthemis hyalina DC.	A	Na	Compositae	Mid	An
Anthemis maris-mortui Eig.	A	E	Compositae	D, Xd	An
Anthemis leucanthemifolia Boiss. & Blanche	A	E	Compositae	Mid, T	An
Anthemis zoharyana Eig.	A	E	Compositae	D	An
Anthemis melampodina Delile	A	Na	Compositae	D, Xd	An
Anthemis hebronica Boiss. & Kotschy	A	E	Compositae	T	An
Anthemis pseudocotula Boiss.	A	Na	Compositae	Mid, T, D	An
Anthephora laevis Stapf. & C. E. Hubb	A	Na	Poaceae	Xd	Wi
Anthriscus lamprocarpa Boiss.	Hm	Na	Apiaceae	Mid	An
Apium graveolens L.	A	Na	Apiaceae	Mid	Wi
Arabis aucheri Boiss.	A	Na	Brassicaceae	Mid, T	An
Arabis verna (L.) R.Br.	A	Na	Brassicaceae	Mid	An
Arabis nova Vill.	A	Na	Brassicaceae	D	An
Apium nodiflorum (L.) Lag.	Hm	Na	Apiaceae	Mid	An
Araujia sericifera Brot.	Cm, V	Na	Apocynaceae	Mid	An
Roemeria hybrida (L.) DC.	A	Na	Papaveraceae	T, D, Xd	An
Arenaria deflexa Decaisne	C,H	Na	Caryophyllaceae	Mid	An
Arenaria serpyllifolia subsp. leptoclados (Rchb.) Nyman	A	Na	Caryophyllaceae	Mid, T, D	An
Argemone mexicana L.	A	Na	Papeveraceae	Mid, T	An
Aristida adscensionis L.	A, Hm	Na	Poaceae	Xd	An
Arisarum vulgare Trag. Tozz.	G	Na	Araceae	M, T	An
Argyrolobium uniflorum (Decne.) Jaub. & Spach	Cm	Na	Leguminosae	T, D	An
Aristida sieberiana Trin.	Hm	E	Poaceae	Mid	Wi
Aristolochia parvifolia Sm.	Hm, V	E	Aristolochiaceae	Mid, T	An
Aristolochia paecilantha Boiss.	Hm	Na	Aristolochiaceae	Mid	An
Arnebia decumbens (Vent.) Coss. & Kralik	A	Na	Boraginaceae	D, Xd	An
Aristolochia sempervirens L.	Hm, V	Na	Aristolochiaceae	Mid	An
Arrhenatherum palaestinum Boiss.	G	E	Poaceae	Mid, T	An
Arnebia linearifolia A.DC.	A	Na	Boraginaceae	D, Xd	An
Aristolochia bottae Jaub. & Spach	Hm	Na	Aristolochiaceae	Mid	An
Artemisia squamata L.	A	Na	Apiaceae	Mid, T	An
Artemisia herba-alba Asso	Cm	Na	Compositae	D, Xd	An
Artemisia monosperma Delile	Cm	Na	Compositae	Mid, T, D, Xd	An
Arthrocnemum macrostachyum (Morici.) K.Koch	Cm	Na	Amaranthaceae	Mid, D, Xd	An
Arum dioscoridis Sm.	G	Na	Araceae	Mid	An
Arum palaestinum Boiss.	G	E	Araceae	Mid	Wi
Arundo plinii Turra	G, Phs	Na	Poaceae	Mid, T, D, Xd	Wi



Asparagus aphyllus L.	G, V	Na	Asparagaceae	Mid	Wi
Arundo donax L.	G, Phs	Na	Poaceae	Mid, T	An
Asparagus horridus L.	G, V	Na	Asparagaceae	Mid, T, D, ED	An
Asperula arvensis L.	A	Na	Rubiaceae	Mid, T	An
Asperugo procumbens L.	A	Na	Asparagaceae	T, D	An
Asparagus palaestinus Baker	G, V	E	Asparagaceae	Mid, T	Wi
Asphodeline brevicaulis (Bertol.) J.Gay ex Baker	Hm	Na	Xanthorrhoeaceae	T	Wi
Asphodelus ramosus L.	Hm	Na	Xanthorrhoeaceae	Mid, T, D	An
Asphodelus fistulosus L.	Hm	Na	Xanthorrhoeaceae	Mid, T, D	An
Asphodeline lutea (L.) Reichenb	Hm	Na	Xanthorrhoeaceae	Mid, D	An
Asphodelus tenuifolius Cav.	A	Na	Xanthorrhoeaceae	T, D, Xd	An
Asphodelus viscidulus Boiss.	G	Na	Xanthorrhoeaceae	Xd	An
Asplenium sagittatum (DC.) Bunge, A. J.	Hm	Na	Aspleniaceae	Mid	Fer
Aster subulatus (Michx.) Hort. ex Michx.	F, A	Na	Compositae	Mid, T, D, Xd	An
Asteriscus aquaticus (L.) Less.	A	Na	Compositae	Mid, T	An
Astomaea seselifolia (A.DC.) Rauschert	G	Na	Apiaceae	Mid, T, D	An
Asteriscus graveolens (Forssk.) Less.	Cm	Na	Compositae	D, XD	An
Astracantha bethlehemitica (Boiss.) Podl.	Cm	E	Leguminosae	T, D	An
Astragalus boeticus L.	A	Na	Fabaceae	Mid, T, D	An
Astragalus alleppicus Boiss.	Hm	Na	Fabaceae	T	An
Astragalus annularis Forssk.	A	Na	Fabaceae	D, Xd	An
Astragalus brachystachys DC.	Hm	Na	Fabaceae	T	An
Astragalus berytheus Boiss. & Blanche	A	Na	Fabaceae	Mid, T	An
Astracantha deinacantha (Boiss.) Podlech	Cm	Na	Fabaceae	Mid, T	An
Astragalus bombycinus Boiss.	A	Na	Fabaceae	D, Xd	An
Astragalus asterias Steven	A	Na	Fabaceae	T, D, Xd	An
Astragalus callichrous Boiss.	A	Na	Fabaceae	T	An
Astragalus campylorrhynchus Fisch. & C.A.Mey.	A	Na	Fabaceae	D	An
Astragalus caprinus L.	Hm	Na	Fabaceae	D	An
Astragalus dactylocarpus Boiss.	Hm	Na	Leguminosae	Xd	An
Astragalus cretaceus Boiss. & Kotschy	Hm	Na	Leguminosae	T	An
Astragalus corrugatus Bertol.	A	Na	Fabaceae	D, Xd	An
Astragalus epiglottis L.	A	Na	Leguminosae	Mid, T	An
Astragalus fruticosus Forssk	Hm	Na	Leguminosae	T, D	An
Astragalus guttatus Banks & Sol.	A	Na	Leguminosae	T, D	An
Astragalus kahiricus DC.	Hm	Na	Leguminosae	D, Xd	An
Astragalus intercedens Rech.f.	A	Na	Leguminosae	Xd	An
Astragalus pehuenches Niederl.	Hm	Na	Leguminosae	Mid, T	An
Astragalus palaestinus Eig.	Hm	E	Leguminosae	Mid, T	An
Astragalus sanctus Boiss.	Cm	Na	Fabaceae	D, Xd	An
Astragalus peregrinus Vahl.	A	Na	Leguminosae	T, D	An
Astragalus hispidulus DC.	A	Na	Fabaceae	D	An
Atractylis serratuloides (Cass.) DC.	Cm	Na	Compositae	T, D	An
Astragalus spinosus (Forssk.) Muschl.	Cm	Na	Leguminosae	D, Xd	An
Atractylis phaeolepis Pomel	Cm	Na	Compositae	Xd	An
Atractylis cancellata L.	A	Na	Compositae	Mid, T	An
Atractylis carduus (Forssk.) C.Chr.	Cm	Na	Compositae	Mid, T, D, Xd	An
Astragalus tribuloides Delile	A	Na	Fabaceae	D, Xd	An
Atractylis prolifera Boiss.	A	Na	Compositae	D	An
Astragalus scorpioides Willd.	A	Na	Leguminosae	T	An
Atriplex glauca L.	Cm	Na	Amaranthaceae	D, Xd	Wi
Atriplex halimus L.	Phs	Na	Amaranthaceae	T, D, Xd	Wi
Atriplex semibaccata R.Br.	Cm	Na	Amaranthaceae	Mid, T, D, Xd	Wi
Atriplex lasiantha Boiss.	Cm, A	Na	Amaranthaceae	Mid, T, D	Wi
Atriplex leuoclada Boiss. var. leuoclada	Cm	Na	Amaranthaceae	T, D, Xd	Wi

Classified Plant Al-Dhahiriya in the South of Palestine

<i>Avena barbata</i> Pott ex Link	A	Na	Poaceae	Mid, T	Wi
<i>Atriplex suberecta</i> Verd.	A	Na	Amaranthaceae	D, Xd	Wi
<i>Atriplex tatarica</i> L.	A	Na	Amaranthaceae	Mid, T, D	Wi
<i>Atriplex holocarpa</i> F. Muell.	A	Na	Amaranthaceae	D, Xd	Wi
<i>Avena clauda</i> Durieu	A	Na	Poaceae	Mid, T	Wi
<i>Ballota philistaea</i> Bornm.	Cm	E	Lamiaceae	Mid	An
<i>Balanites aegyptiaca</i> (L.) Delile	T	Na	Zygophyllaceae	T, D, Xd	An
<i>Avena sterilis</i> L.	HE	Na	Poaceae	Mid, T, D, Xd	Wi
<i>Ballota undulata</i> (Sieber ex. Fresen.) Benth	Cm	Na	Lamiaceae	Mid, T, D	An
<i>Bassia arabica</i> (Boiss.) Maire & Weiller	Cm	Na	Amaranthaceae	D, Xd	Wi
<i>Bellardia trixago</i> (L.) All.	P	Na	Orobanchaceae	Mid	An
<i>Bassia indica</i> (Wight) A.J.Scott.	A	Na	Amaranthaceae	T, D, Xd	Wi
<i>Bassia muricata</i> (L.) Asch.	A	Na	Amaranthaceae	D, Xd	Wi
<i>Bassia scoparia</i> (L.) A.J.Scott.	A	Na	Amaranthaceae	Mid, T	Wi
<i>Bellevalia eigii</i> Feinbrun	G	E	Asparagaceae	T, D	An
<i>Bellevalia desertorum</i> Eig. & Feinbrun	G	Na	Asparagaceae	D, Xd	An
<i>Bassia eriophora</i> (Schrad.) Asch.	A	Na	Amaranthaceae	D, Xd	Wi
<i>Calicotome villosa</i> (Poir.) Link.	Phs	Na	Leguminosae	Mid, T	An
<i>Calendula pachysperma</i> Zohary	A	E	Compositae	T	An
<i>Calendula Palaestina</i> Boiss.	A	E	Compositae	Mid	An
<i>Callipeltis aperta</i> Boiss. & Buhse	A	Na	Rubiaceae	D, Xd	Wi
<i>Calepina irregularis</i> (Asso)Thell.	A	Na	Brassicaceae	Mid, T	An
<i>Calendula tripterocarpa</i> Rupr.	A	Na	Compositae	Xd	An
<i>Calligonum comosum</i> L'Hér.	Phs	Na	Polygonaceae	D, Xd	An
<i>Calendula arvensis</i> M. Bieb.	A	Na	Compositae	Mid, T, D, Xd	An
<i>Callipeltis cucullaria</i> (L.) DC.	A	Na	Rubiaceae	Mid, T, D	Wi
<i>Callipeltis factorovskyi</i> (Eig.) Ehrend.	A	Na	Rubiaceae	T	Wi
<i>Calotropis procera</i> (Aiton) Aiton f.	Tr	Na	Apocynaceae	D, Xd	An
<i>Campanula sulphurea</i> Boiss.	A	Na	Campanulaceae	Mid, T, D, Xd	An
<i>Caralluma europaea</i> (Guss.) N. E. Brown var. <i>judaica</i> Zohary	Hm	Na	Apocynaceae	Mid, T, D	An
<i>Capparis decidua</i> (Forssk.) Edgew.	T	Na	Capparaceae	Xd	An
<i>Capparis sicula</i> Duh.	Cm	Na	Capparaceae	Mid, T	An
<i>Carduus argentatus</i> L.	A	Na	Compositae	Mid, T, D	An
<i>Capsella bursa-pastoris</i> (L.) Medik.	A	Na	Brassicaceae	Mid, T, D	An
<i>Capparis spinosa</i> L.	Cm, H	Na	Brassicaceae	Mid, T, D	An
<i>Cardopatum corymbosum</i> (L.) Pers.	Hm	Na	Compositae	Mid	An
<i>Caralluma sinaica</i> (Decne.) A. Berger	Hm	E	Apocynaceae	Xd	An
<i>Cardamine hirsuta</i> L.	A	Na	Brassicaceae	Mid	An
<i>Capparis aegyptia</i> Lam.	Cm, PhS	Na	Capparaceae	D, Xd	An
<i>Capsella rubella</i> Reuter	Hm	Na	Brassicaceae	Mid, T	An
<i>Carduus getulus</i> Pomel.	A	Na	Compositae	D, Xd	An
<i>Carduus pycnocephalus</i> subsp. <i>marmoratus</i> (Boiss. & Heldr.) P.H.Davis	A	Na	Compositae	Mid, D, Xd	An
<i>Chaetosciadium trichospermum</i> (L.) Boiss.	A	Na	Apiaceae	Mid, T, D	An
<i>Carthamus nitidus</i> Boiss.	A	Na	Compositae	T, D, Xd	An
<i>Carthamus tenuis</i> (Boiss. & Blanche) Bornm.	A	Na	Compositae	Mid, T	An
<i>Centaurea aegyptiaca</i> L.	Cm	Na	Compositae	D, Xd	An
<i>Centaurea benedicta</i> (L.) L.	A	Na	Compositae	Mid, T, D	An
<i>Centaurea lanulata</i> Eig.	Hm	Na	Compositae	D, Xd	An
<i>Chenopodium vulvaria</i> L.	A	Na	Amaranthaceae	Mid, T, D	Wi
<i>Centaurea procurrens</i> Sieber ex. Spreng.	Cm	Na	Compositae	Mid, T	An
<i>Centaurea rigida</i> Banks & Sol.	Hm	Na	Compositae	T	An
<i>Cheilanthes acrostica</i> (Balb.) Tod.	Hm	Na	Pteridaceae	Mid, T, D	Fer
<i>Chardinia orientalis</i> (L.) Kuntze	A	Na	Compositae	Mid, T, D	An
<i>Chenopodium album</i> L.	A	Na	Amaranthaceae	Mid, T, D, Xd	Wi
<i>Cheilanthes pteridioides</i> (Reichard) C. Chr.	Hm	Na	Pteridaceae	Mid, T, D	Fer



Cheilanthes vellea (Aiton) Domin	Hm	Na	Pteridaceae	Mid, T, D	Fer
Carthamus glaucus M. Bieb.	A	Na	Compositae	Mid, T	An
Chenopodium ambrosioides L.	A	Na	Amaranthaceae	Mid, T, D	Wi
Chlamydomphora tridentata Delile Ehrenb. ex Less.	A	Na	Compositae	Mid, T	An
Centaurea pallescens Delile	A	Na	Compositae	D, Xd	An
Chiliadenus iphionoides (Boiss. & Blanche) Brullo.	Cm	Na	Compositae	Mid, T, D	An
Chenopodium murale L.	A	Na	Amaranthaceae	Mid, T, D, ED	Wi
Chloris gayana Kunth	Cm, G, Hm	Na	Poaceae	Mid, T	Wi
Cistanche tubulosa (Schenk) Wight	P	Na	Orobanchaceae	D, Xd	An
Cistanche salsa (C.A.Mey.) Beck.	P	Na	Orobanchaceae	Xd	An
Cistus salviifolius L.	Cm	Na	Cistaceae	Mid, D, Xd	An
Cistus creticus L.	Cm	Na	Cistaceae	Mid, D, Xd	An
Clypeola jonthlaspi L.	A	Na	Brassicaceae	M, T, D	An
Citrullus colocynthis (L.) Schrader	Hm	Na	Cucurbitaceae	T, Xd	An
Clypeola aspera (Grauer) Turrill.	A	Na	Brassicaceae	T, D	An
Chloris virgata Sw.	A	Na	Poaceae	Mid, T, Xd	Wi
Cocculus pendulus (J.R.Forst. & G.Forst.) Diels	Cm, V	Na	Menispermaceae	Xd	An
Convolvulus althaeoides L.	G, V	Na	Convolvulaceae	Mid, T, D	An
Convolvulus arvensis L.	G, V	Na	Convolvulaceae	Mid, T, D	An
Convolvulus auricomus Bhandari	C, V	Na	Convolvulaceae	Xd	An
Convolvulus betonicifolius Miller	G, V	Na	Convolvulaceae	Mid, T	An
Crepis aspera L. var. dillacerata Bomm.	A	Na	Compositae	Mid, T, D	An
Convolvulus humilis Jacq.	A	Na	Convolvulaceae	M	An
Corchorus olitorius L.	A	Na	Tiliaceae	Mid, T	An
Convolvulus oleifolius Desr.	Cm	Na	Convolvulaceae	T, D	An
Convolvulus palaestinus Boiss.	G, V	E	Convolvulaceae	Mid, T	An
Convolvulus siculus L.	A, V	Na	Convolvulaceae	Mid, T, D	An
Convolvulus pilosellifolius Desr.	G, V	Na	Convolvulaceae	Xd	An
Convolvulus scammonia L.	G, V	Na	Convolvulaceae	Mid	An
Convolvulus dorycnium L.	Hm	Na	Convolvulaceae	Mid, T	An
Convolvulus stachydifolius Choisy	G, V	Na	Convolvulaceae	T	An
Convolvulus lanatus Vahl.	Cm	Na	Convolvulaceae	T, D, Xd	An
Corchorus trilocularis L.	A	Na	Tiliaceae	Mid, T	An
Cordia sinensis Lam.	T	Na	Boraginaceae	Xd	An
Crepis aculeata (DC.) Boiss.	A	E	Compositae	Mid, T	An
Convolvulus pentapetaloides L.	A, V	Na	Convolvulaceae	Mid, T	An
Crepis hierosolymitana Boiss.	Hm	E	Compositae	Mid	An
Cutandia memphitica (Spreng.) Benth.	A	Na	Poaceae	Mid, T, D, Xd	Wi
Crepis palaestina (Boiss.) Bomm.	A	E	Compositae	Mid, T	An
Crepis reuteriana Boiss	Hm	Na	Compositae	Mid	An
Cynoglossum creticum Miller	Hm	Na	Boraginaceae	Mid	An
Crepis senecioides Delile	A	Na	Compositae	D, Xd	An
Cynosurus echinatus L.	A	Na	Poaceae	Mid, T	Wi
Cressa cretica L.	Hm	Na	Convolvulaceae	Mid, T, D, Xd	An
Crucianella aegyptiaca L.	A	Na	Rubiaceae	Mid, T, D	An
Crepis sancta (L.) Bomm.	A	Na	Compositae	Mid, T, D, ED	An
Cynodon dactylon (L.) Pers.	Cm, G	Na	Poaceae	Mid, T, D, ED	Wi
Crepis syriaca (Bornm.) Bab. & Navashin	A	Na	Compositae	M	An
Cynomorium coccineum L.	Hm, P	Na	Cynomoriaceae	D, Xd	An
Cynosurus coloratus Lehm. Ex. Steud. (Cynosurus callitrichus Barby -Boiss & Barby)	A	Na	Poaceae	Mid, T	Wi
Crepis micrantha Czerep.	A	Na	Compositae	Mid, T	An
Cynosurus elegans Desf.	A	Na	Poaceae	Mid	Wi
Datura ferox L.	A	Na	Solanaceae	Mid, T	An

Classified Plant Al-Dhahiriya in the South of Palestine

<i>Cyperus fuscus</i> L.	A	Na	Cyperaceae	Mid, T	Wi
<i>Cyperus glaber</i> L.	A	Na	Cyperaceae	Mid, T	Wi
<i>Cyperus jeminicus</i> Rottb.	Hm	Na	Cyperaceae	Xd	Wi
<i>Datura stramonium</i> L.	A	Na	Solanaceae	Mid, T	An
<i>Cyperus distachyos</i> All.	Hm	Na	Cyperaceae	Mid, D	Wi
<i>Cyperus longus</i> L.	Hm	Na	Cyperaceae	Mid, T	Wi
<i>Daucus carota</i> L.	Hm, A	Na	Apiaceae	Mid, T	An
<i>Cyperus laevigatus</i> L.	Hm	Na	Cyperaceae	Mid, T, D, Xd	Wi
<i>Datura innoxia</i> Miller	A	Na	Solanaceae	Mid, T	An
<i>Cyperus nitidus</i> (Lam.) J. Raynal	Hm	Na	Cyperaceae	Mid	Wi
<i>Daucus broteri</i> Ten.	A	Na	Apiaceae	Mid	An
<i>Cyperus alopecuroides</i> Rottb.	Hm	Na	Cyperaceae	Mid	Wi
<i>Daucus durieua</i> Lange	A	Na	Apiaceae	Mid, T	An
<i>Daucus guttatus</i> Sm.	A	Na	Apiaceae	Mid, T	An
<i>Daucus littoralis</i> Sm.	A	Na	Apiaceae	Mid, T	An
<i>Delphinium ithaburense</i> Boiss.	G	Na	Ranunculaceae	Mid, T, D	An
<i>Desmostachya bipinnata</i> (L.) Stapf.	Hm	Na	Poaceae	Mid, D, Xd	Wi
<i>Desmazeria philistaea</i> (Boiss.) H. Scholz	A	E	Poaceae	Mid, T, D	Wi
<i>Deverra triradiata</i> Hochst. Ex. Boiss.	Cm	Na	Apiaceae	D, Xd	An
<i>Deverra tortuosa</i> (Desf.) DC.	Cm	Na	Apiaceae	T, D, Xd	An
<i>Delphinium peregrinum</i> L.	A	Na	Ranunculaceae	Mid, T, D	An
<i>Dipcadi erythraeum</i> Webb. & Berthel.	G	Na	Aspleniaceae	D, Xd	An
<i>Dittrichia viscosa</i> (L.) W. Greuter	Cm	Na	Compositae	Mid, T, D	An
<i>Diplotaxis erucoides</i> (L.) DC.	A	Na	Brassicaceae	Mid, T, D, Xd	An
<i>Diplotaxis acris</i> (Forssk.) Boiss.	A	Na	Brassicaceae	ED	An
<i>Diplotaxis tenuifolia</i> (L.) DC.	Hm	Na	Brassicaceae	D	An
<i>Drimia undata</i> Stearn	G	Na	Asparagaceae	D, Xd	An
<i>Doellia bovei</i> (DC.) Anderb.	Cm	Na	Compositae	Mid, D, Xd	An
<i>Diplotaxis harra</i> (Forssk.) Boiss.	A, Cm, Hm	Na	Brassicaceae	D, Xd	An
<i>Drimia maritima</i> (L.) Stearn	G	Na	Asparagaceae	Mid, T, D, Xd	An
<i>Echinochloa colonum</i> (L.) Link.	A	Na	Poaceae	Mid, T, D	Wi
<i>Ecballium elaterium</i> (L.) A. Richard	Hm	Na	Cucurbitaceae	Mid, T	An
<i>Echinaria capitata</i> (L.) Desf.	A	Na	Poaceae	Mid, T	Wi
<i>Echinops philistaeus</i> Feinbrun & Zohary	Cm	E	Compositae	Mid, T	An
<i>Echinops acantholepis</i> Jaub. & Spach	A	Na	Compositae	D	An
<i>Diplotaxis viminea</i> (L.) DC.	A	Na	Brassicaceae	Mid, T	An
<i>Echinops polyceras</i> Boiss.	Hm	Na	Compositae	D, Xd	An
<i>Echium rauwolfii</i> Delile	A	Na	Boraginaceae	D, Xd	An
<i>Echium angustifolium</i> Miller	Cm	Na	Boraginaceae	Mid, T	An
<i>Echium glomeratum</i> Poir.	Hm	E	Boraginaceae	Mid	An
<i>Echium judaeum</i> Lacaita	A	E	Boraginaceae	Mid, T	An
<i>Enarthrocarpus strangulatus</i> Boiss.	A	Na	Brassicaceae	D, Xd	An
<i>Ephedra aphylla</i> Forskal	V, PhS	Na	Ephedraceae	T, D, Xd	An
<i>Enneapogon desvauuxii</i> P. Beauv.	Hm	Na	Poaceae	Xd	An
<i>Enneapogon persicus</i> Boiss.	Hm	Na	Poaceae	Xd	Wi
<i>Epilobium hirsutum</i> L.	Hm	Na	Onagraceae	Mid	An
<i>Ephedra foeminea</i> Forssk.	V, PhS	Na	Ephedraceae	Mid, T, D	An
<i>Echinops pungens</i> Trautv.	Cm, Hm	Na	Compositae	Mid, T	An
<i>Epipactis veratrifolia</i> Boiss. & Hohen	G	Na	Orchidaceae	Mid, Xd	An
<i>Eragrostis minor</i> Host.	A	Na	Poaceae	Mid, T, D, Xd	Wi
<i>Eremobium aegyptiacum</i> (Spreng.) Asch. ex Boiss.	Hm	Na	Brassicaceae	D, Xd	An
<i>Erodium gruinum</i> (L.) L'Her.	A	Na	Geraniaceae	Mid, T	An
<i>Erigeron canadensis</i> L.	A	Na	Compositae	Mid, T, D	An
<i>Erigeron sumatrensis</i> Retz.	A	Na	Compositae	Mid, T, D	An
<i>Erigeron bonariensis</i> L.	A	Na	Compositae	Mid, T, D	An



<i>Erodium glaucophyllum</i> (L.) L'Hér.	H	Na	Geraniaceae	D, Xd	An
<i>Eryngium glomeratum</i> Lam.	Hm	Na	Apiaceae	Mid, T, D	An
<i>Euphorbia granulata</i> Forskal	A	Na	Euphorbiaceae	Xd	An
<i>Erodium malacoides</i> (L.) L'Her.	A	Na	Geraniaceae	Mid, T	An
<i>Erysimum crassipes</i> Fisch. & C.A.Mey.	Hm	Na	Brassicaceae	Mid, T	An
<i>Euphorbia hierosolymitana</i> Boiss.	Cm	E	Euphorbiaceae	M, T, Xd	An
<i>Eryngium falcatum</i> F. Delaroche	Hm	Na	Apiaceae	Mid	An
<i>Euphorbia aleppica</i> L.	A	Na	Euphorbiaceae	Mid, T	An
<i>Eryngium maritimum</i> L.	Hm	Na	Apiaceae	Mid	An
<i>Erodium crassifolium</i> L'Hér. Ex. Aiton	H	Na	Geraniaceae	D, Xd	An
<i>Erysimum repandum</i> L.	A	Na	Brassicaceae	Mid, T	An
<i>Erodium moschatum</i> (L.) L'Her.	A	Na	Geraniaceae	Mid, T	An
<i>Euphorbia arguta</i> Banks et Solander	A	Na	Euphorbiaceae	Mid	An
<i>Fagonia arabica</i> L.	Cm	Na	Zygophyllaceae	D, Xd	An
<i>Euphorbia berythea</i> Boiss. & Blanche	A	Na	Euphorbiaceae	Mid	An
<i>Euphorbia chamaepeplus</i> Boiss. et Gaill.	A	Na	Euphorbiaceae	T, D, Xd	An
<i>Euphorbia chamaesyce</i> L.	A	Na	Euphorbiaceae	Mid, T, D	An
<i>Erodium laciniatum</i> (Cav.) Willd.	A	Na	Geraniaceae	Mid, T, D, Xd	An
<i>Euphorbia falcata</i> var. <i>galilaea</i> (Boiss.) Boiss	A	E	Euphorbiaceae	Mid, T	An
<i>Euphorbia forsskalii</i> J.Gay	A	Na	Euphorbiaceae	Xd	An
<i>Eryngium creticum</i> Lam.	Hm	Na	Apiaceae	Mid, T	An
<i>Euphorbia helioscopia</i> L.	A	Na	Euphorbiaceae	M, T	An
<i>Euphorbia heterophylla</i> L.	A	Na	Euphorbiaceae	M	An
<i>Fagonia mollis</i> Delile	Cm	Na	Zygophyllaceae	D, Xd	An
<i>Euphorbia hierosolymitana</i> Boiss. Var. <i>romanensis</i> (Baum.) Zohary	Cm	E	Euphorbiaceae	D	An
<i>Euphorbia exigua</i> L.	A	Na	Euphorbiaceae	Mid	An
<i>Euphorbia petiolata</i> Banks et Sol.	A	Na	Euphorbiaceae	Mid, T	An
<i>Faidherbia albida</i> (Delile) A. Chev.	Tr	Na	Leguminosae	M, T, Xd	An
<i>Fagonia bruguieri</i> DC.	Cm	Na	Zygophyllaceae	Xd	An
<i>Euphorbia aulacosperma</i> Boiss.	A	Na	Euphorbiaceae	Mid, T	An
<i>Fagonia orientalis</i> C. Presl.	Cm	Na	Zygophyllaceae	Xd	An
<i>Euphorbia peplus</i> L.	A	Na	Euphorbiaceae	Mid, T	An
<i>Farsetia aegyptia</i> Turra	Cm	Na	Brassicaceae	D, Xd	An
<i>Ferula biverticillata</i> J. Thieb.	Hm	Na	Apiaceae	T	An
<i>Ferulago syriaca</i> Boiss.	Hm	Na	Apiaceae	Mid	An
<i>Ferula orientalis</i> L.	Hm	E	Apiaceae	T	An
<i>Ferula tingitana</i> L.	Hm	Na	Apiaceae	Mid	An
<i>Filago inexpectata</i> Wagenitz	A	Na	Compositae	Mid, T	Wi
<i>Ficus carica</i> L.	Tr	Na	Moraceae	Mid, T, D	An
<i>Ferula communis</i> L.	Hm	Na	Apiaceae	Mid, T	An
<i>Filago palaestina</i> (Boiss.) Chrtk & Holub.	A	E	Compositae	Mid, T	Wi
<i>Foeniculum vulgare</i> Miller	Hm	Na	Apiaceae	Mid, T	An
<i>Fimbristylis bisumbellata</i> (Forssk.) Bubani.	HE	Na	Compositae	Mid	Wi
<i>Fimbristylis ferruginea</i> (L.) Vahl.	HE	Na	Compositae	Mid, T, D	Wi
<i>Frankenia pulverulenta</i> L.	A	Na	Frankeniaceae	Xd	An
<i>Forsskaolea tenacissima</i> L.	Cm, Hm	Na	Urticaceae	D, Xd	Wi
<i>Frankenia hirsuta</i> L.	Cm	Na	Frankeniaceae	Mid, T, D, Xd	An
<i>Galium setaceum</i> Lam.	A	Na	Rubiaceae	Mid, T, D, Xd	An
<i>Gagea dayana</i> Chodat & Beauverd	G	Na	Liliaceae	Mid, D, Xd	An
<i>Filago pyramidata</i> L.	A	Na	Compositae	Mid, T, D	Wi
<i>Gagea reticulata</i> (Pall.) Schult. & Schult.f.	G	Na	Liliaceae	D, Xd	An
<i>Galium hierochuntinum</i> Bornm.	A	E	Rubiaceae	T, D	An
<i>Gagea fibrosa</i> (Desf.) Schult. & Schult. f.	G	Na	Liliaceae	T, D	An
<i>Galium spurium</i> L.	A	Na	Rubiaceae	Mid, T, D	An
<i>Glaucium arabicum</i> Fresen.	Hm	Na	Papaveraceae	D	An
<i>Gymnocarpus sclerocephalus</i> (Decne.) Dahlgren & Thulin	A	Na	Caryophyllaceae	D, Xd	An

Classified Plant Al-Dhahiriya in the South of Palestine

<i>Gymnarrhena micrantha</i> Desf.	A	Na	Compositae	D, Xd	An
<i>Glaucium corniculatum</i> (L.) J. H. Rudolph	Hm	Na	Papaveraceae	T, D	An
<i>Herniaria hirsuta</i> L.	A	Na	Caryophyllaceae	T, D, Xd	Wi
<i>Hippocrepis unisiliquosa</i> L.	A	Na	Leguminosae	Mid, T, D, Xd	An
<i>Helianthemum aegyptiacum</i> (L.) Miller	A	Na	Cistaceae	Mid, T, D	An
<i>Herniaria hemistemon</i> J. Gay	Hm	Na	Caryophyllaceae	D, Xd	Wi
<i>Gymnocarpus decander</i> Forssk.	Cm	Na	Caryophyllaceae	D, Xd	An
<i>Hippocrepis areolata</i> Desv.	A	Na	Leguminosae	T, D, Xd	An
<i>Sinapis incana</i> L.	A	Na	Brassicaceae	Mid, T, D	An
<i>Gypsophila capillaris</i> (Forssk.) C.Chr.	Cm	Na	Caryophyllaceae	T, D, Xd	An
<i>Hirschfeldia incana</i> (L.) Lagr. Foss.	A	Na	Brassicaceae	Mid, T	An
<i>Hippocrepis multisiliquosa</i> L.	A	Na	Leguminosae	Mid, T, D	An
<i>Holcus annuus</i> Salzm. Ex. C. A. Mey.	A	Na	Poaceae	Mid	Wi
<i>Holosteum umbellatum</i> L.	A	Na	Caryophyllaceae	T, D	An
<i>Hormuzakia aggregata</i> (Lehm.) Gusuleac	A	Na	Boraginaceae	Mid, T, D, Dx	An
<i>Hordeum bulbosum</i> L.	Hm	Na	Poaceae	Mid, T	Wi
<i>Ipomoea imperati</i> (Vahl.) Griseb.	Hm	Na	Convolvulaceae	Mid, T	An
<i>Hordeum geniculatum</i> All.	A	Na	Poaceae	Mid, T	Wi
<i>Hueblia calycina</i> (Banks & Sol.) Speta	A	Na	Plantaginaceae	Mid	An
<i>Hordeum spontaneum</i> C. Koch	A	Na	Poaceae	Mid, T, D, ED	Wi
<i>Hyoscyamus desertorum</i> (Aschers. ex Boiss.) Taeckh.	A	Na	Solanaceae	D, Xd	An
<i>Homungia procumbens</i> (L.) Hayek	A	Na	Brassicaceae	Mid, T	An
<i>Hordeum glaucum</i> Stendel	A	Na	Poaceae	Mid, T, D	Wi
<i>Hyacinthella nervosa</i> (Bertol.) Chouard	G	Na	Asparagaceae	T, D	An
<i>Hyoscyamus aureus</i> L.	Cm	Na	Solanaceae	Mid, T, D	An
<i>Holosteum umbellatum</i> subsp. <i>glutinosum</i> (M. Bieb.) Nyman	A	Na	Caryophyllaceae	T, D	An
<i>Iphiaea maris-mortui</i> Feinbrun	Cm	E	Compositae	D	An
<i>Juncus acutus</i> L.	Hm	Na	Juncaceae	Mid, T	Wi
<i>Hordeum marinum</i> Huds.	A	Na	Poaceae	Mid, T	Wi
<i>Ipomoea cairica</i> (L.) Sweet.	Hm, V	Na	Convolvulaceae	Mid, T	An
<i>Juncus bufonius</i> L.	A	Na	Juncaceae	Mid, T, D	Wi
<i>Kickxia floribunda</i> (Boiss.) Täckh. & Boulos	Cm	Na	Plantaginaceae	D, Xd	An
<i>Juniperus oxycedrus</i> L.	Tr	Na	Cupressaceae	Mid	Wi
<i>Kickxia acerbiana</i> (Boiss.) Täckh. & Boulos	Hm	Na	Plantaginaceae	D, Xd	An
<i>Juncus rigidus</i> Desf.	Hm	Na	Juncaceae	D, Xd	Wi
<i>Kickxia aegyptiaca</i> (L.) Nabelek	Cm	Na	Plantaginaceae	Mid, T	An
<i>Lactuca orientalis</i> Boiss.	Cm	Na	Compositae	T, D	An
<i>Lathyrus ciliolatus</i> Sam. Ex. Rech. f.	A, V	Na	Leguminosae	Mid, T	An
<i>Lagoecia cuminoides</i> L.	A	Na	Apiaceae	Mid, T, D	An
<i>Lactuca saligna</i> L.	A	Na	Compositae	Mid, T	An
<i>Kickxia judaica</i> Danin	Cm	E	Plantaginaceae	T, D	An
<i>Lathyrus aphaca</i> L.	A, V	Na	Leguminosae	Mid, T	An
<i>Lactuca undulata</i> Ledeb.	A	Na	Compositae	D	An
<i>Lathyrus annuus</i> L.	A	Na	Leguminosae	Mid	An
<i>Lactuca hispida</i> DC.	Hm	Na	Compositae	Mid	An
<i>Lathyrus hierosolymitanus</i> Boiss.	A, V	N	Leguminosae	Mid	An
<i>Lathyrus blepharicarpus</i> Boiss.	A, V	Na	Leguminosae	Mid, T	An
<i>Lactuca serriola</i> L.	A	Na	Compositae	Mid, T, D	An
<i>Lathyrus gorgoni</i> Parl.	A, V	Na	Leguminosae	Mid	An
<i>Lactuca tuberosa</i> Jacq.	A	Na	Compositae	Mid	An
<i>Lathyrus inconspicuus</i> L.	A	Na	Fagaceae	Mid, T	An
<i>Lathyrus marmoratus</i> Boiss. et Bl.	A, V	Na	Fagaceae	Mid, T	An
<i>Launaea angustifolia</i> (Desf.) Kuntze	A	Na	Compositae	D, Xd	An
<i>Lathyrus pseudocicera</i> Pamp.	A, V	Na	Fagaceae	T, D	An
<i>Lathyrus sphaericus</i> Retz.	A, V	Na	Fagaceae	Mid	An
<i>Leontice leontopetalum</i> L.	G	Na	Berberidaceae	T, D	An



Lycium depressum Stocks	Phs	Na	Solanaceae	Xd	An
Launaea mucronata (Forssk.) Muschl	A	Na	Compositae	D, Xd	An
Lathyrus ochrus (L.) DC.	A, V	Na	Fagaceae	Mid	An
Leontodon tuberosus L.	Hm	Na	Compositae	Mid, T	An
Lobularia libyca (Viv.) Webb. & Berthel.	A	Na	Brassicaceae	D, Xd	An
Leontodon laciniatus (Bertol.) Widder	A	Na	Compositae	D, Xd	An
Linaria tenuis Spreng.	A	Na	Plumbaginaceae	T, D	An
Lobularia arabica(Boiss.) Muschl.	A	Na	Brassicaceae	D, Xd	An
Launaea nudicaulis (L.) Hook.f.	Hm	Na	Compositae	D, Xd	An
Lotus conimbricensis Brot.	A	Na	Leguminosae	Mid	An
Lycium schweinfurthii Dammer	Phs	E	Solanaceae	Mid	An
Lotus conjugatus subsp. requienii (Sanguin.) Greuter	A	Na	Leguminosae	Mid	An
Lotus creticus L.	Cm	Na	Leguminosae	Mid	An
Lotus edulis L.	A	Na	Leguminosae	Mid	An
Lotus halophilus Boiss. & Sprune	A	Na	Leguminosae	Mid, T, D, Xd	An
Lotus hispidus DC.	A	Na	Leguminosae	Mid	An
Lotus longesiliquosus R.Roem.	Hm	Na	Leguminosae	Mid	An
Malva aegyptia L.	A	Na	Malvaceae	D, Xd	An
Lotus tenuis Waldst. & Kit.	A	Na	Leguminosae	Mid, T, D	An
Malva sylvestris L.	Hm	Na	Malvaceae	Mid, T, D	An
lotus peregrinus L.	Hm	Na	Leguminosae	Mid, T	An
Lycium shawii Roem. & Schult.	Phs	Na	Solanaceae	D, Xd	An
Lotus tetragonolobus L.	A	Na	Leguminosae	Mid	An
Launaea fragilis (Asso.) Pau.	Hm	Na	Compositae	Mid, T	An
Lotus angustissimus L.	A	Na	Leguminosae	Mid	An
Malcolmia africana (L.) R.Br.	A	Na	Brassicaceae	D, Xd	An
Malva nicaeensis All.	A	Na	Malvaceae	Mid, T, D	An
Lotus ornithopodioides L.	A	Na	Leguminosae	Mid	An
Malva multiflora (Cav.) Soldano, Banfi. & Galasso.	A	Na	Malvaceae	Mid, T	An
Lotus palaestinus (Boiss. & Blanche) Blatt.	A	E	Leguminosae	Mid	An
Malva oxyloba Boiss.	A	Na	Malvaceae	Mid	An
Medicago blancheana Boiss.	A	Na	Fagaceae	Mid	An
Marrubium vulgare L.	Cm	Na	Lamiaceae	Mid, T, D	An
Malvella sherardiana (L.) Jaub. & Spach	Hm	Na	Malvaceae	Mid, T	An
Marrubium alysson L.	Cm	Na	Lamiaceae	Sd	An
Lotus palustris Willd.	Hm	Na	Leguminosae	Mid	An
Matricaria aurea (L.) Sch. Bip.	A	Na	Compositae	Mid, T, D	An
Medicago astroites (Fisch. & Medicago astroites	A	Na	Fagaceae	D	An
Malva parviflora L.	A	Na	Malvaceae	T, D, Xd	An
Melia azeradach L.	Tr	Na	Meliaceae	Mid	An
Medicago coronata (L.) Bartal.	A	Na	Fagaceae	Mid, T	An
Nerium oleander L.	Phs	Na	Apocynaceae	Mid, T	An
Medicago granadensis Willd.	A	Na	Fagaceae	Mid	An
Medicago hypogaea E. Small.	A	Na	Fagaceae	T	An
Neurada procumbens L.	A	Na	Neuradaceae	D, Xd	An
Medicago laciniata (L.) Miller	A	Na	Fagaceae	T, D, Xd	An
Nonea philistaea Boiss.	A	E	Brassicaceae	Mid	An
Medicago monspeliaca (L.) Trautv.	A	Na	Fagaceae	Mid, T	An
Nonea ventricosa (SM.) Griseb.	A	Na	Brassicaceae	Mid, T	An
Medicago sativa L.	Hm	Na	Fagaceae	Mid, T	An
Nigella arvensis L.	A	Na	Ranunculaceae	Mid, T, D	An
Melica persica Kunth	Hm	Na	Leguminosae	M, Sd	An
Notobasis syriaca (L.) Cass.	A	Na	Compositae	Mid, T	An
Medicago constricta Durieu.	A	Na	Fagaceae	Mid	An
Nicotiana glauca Graham	Tr	Na	Solanaceae	D, Xd	An
Medicago intertexta subsp. ciliaris (L.) Ponert.	A	Na	Fagaceae	Mid	An
Noaea mucronata (Forssk.) Asch. & Schweinf.	Cm	Na	Amaranthaceae	T, D, Xd	Wi

Classified Plant Al-Dhahiriya in the South of Palestine

<i>Medicago doliata</i> Carmign.	A	Na	Fagaceae	Mid	An
<i>Onopordum telavivense</i> Eig., (<i>Onopordum carduiforme</i> Boiss.)	Hm	E	Compositae	Mid, T	An
<i>Medicago littoralis</i> Loisel.	A	Na	Fagaceae	Mid, T	An
<i>Notoceras bicorne</i> (Aiton) Amo.	A	Na	Brassicaceae	D, Xd	An
<i>Olea europaea</i> L.	Tr	Na	Oleaceae	Mid	Wi
<i>Ononis biflora</i> Desf.	A	Na	Leguminosae	Mid, T	An
<i>Onopordum cynarocephalum</i> Boiss. & Blanche	Hm	Na	Compositae	Mid	An
<i>Ononis natrix</i> L.	Cm	Na	Leguminosae	Mid, T, D	An
<i>Medicago radiata</i> L.	A	Na	Fagaceae	T, D	An
<i>Ononis spinosa</i> L.	Hm	Na	Leguminosae	Mid, T, D, Xd	An
<i>Onosma orientalis</i> (L.) L.	Cm	Na	Boraginaceae	Mid, T, D	An
<i>Onopordum jordanicola</i> Eig.	Hm	Na	Compositae	Mid, T	An
<i>Ononis serrata</i> Forssk.	A	Na	Leguminosae	Mid, T, D, Xd	An
<i>Onopordum macrocephalum</i> Eig.	Hm	Na	Compositae	T, D	An
<i>Ononis mollis</i> Savi.	A	Na	Leguminosae	Mid, T	An
<i>Onopordum palaestinum</i> Eig.	Hm	E	Compositae	T	An
<i>Orobanche cernua</i> Loefl.	P	Na	Orchidaceae	T, D, Xd	An
<i>Onosma gigantea</i> Lam.	Hm	Na	Boraginaceae	Mid, T	An
<i>Orobanche muteli</i> F. W. Schultz	P	Na	Orchidaceae	Mid, T, D	An
<i>Orobanche aegyptiaca</i> Pres.	P	Na	Leguminosae	Mid	An
<i>Orobanche palaestina</i> Reut.	P	E	Orchidaceae	Mid	An
<i>Onopordum alexandrinum</i> Boiss.	Hm	Na	Leguminosae	T, D	An
<i>Onosma echinata</i> Desf. (<i>Onosma aleppica</i> Boiss.)	Hm	Na	Boraginaceae	T	An
<i>Orobanche pubescens</i> d'Urv.	P	Na	Orchidaceae	Mid	An
<i>Paliurus spina-christi</i> Miller	Tr	Na	Rhamnaceae	Mid	An
<i>Paronychia capitata</i> (L.) Lam.	Hm	Na	Caryophyllaceae	Mid, D	An
<i>Papaver hybridum</i> L.	A	Na	Papaveraceae	Mid, T, D, Xd	An
<i>Papaver polytrichum</i> Boiss. & Kotschy	A	Na	Papaveraceae	T, D, Xd	An
<i>Phagnalon rupestre</i> (L.) DC.	Cm	Na	Compositae	Mid, T, D	An
<i>Papaver umbonatum</i> Boiss.	A	Na	Papaveraceae	Mid, T	An
<i>Paronychia Arabica</i> (L.) DC.	Hm, A	Na	Caryophyllaceae	D, Xd	An
<i>Paronychia argentea</i> Lam.	Hm	Na	Caryophyllaceae	Mid, T	An
<i>Peganum harmala</i> L.	Hm	Na	Nitrariaceae	T, D, Xd	An
<i>Paronychia palaestina</i> Eig.	Hm	E	Caryophyllaceae	Mid	An
<i>Phlomis chrysophylla</i> Boiss.	Cm	Na	Lamiaceae	Mid	An
<i>Papaver humile</i> Fedde	A	Na	Papaveraceae	Mid, T, D	An
<i>Phagnalon barbeyanum</i> Asch. & Schweinf.	Cm	Na	Compositae	D, Xd	An
<i>Papaver somniferum</i> L.	A	Na	Papaveraceae	T, D, Xd	An
<i>Phlomis brachyodon</i> (Boiss.) Zohary ex Rech. f.	Cm	Na	Lamiaceae	Mid, T	An
<i>Paronychia sinaica</i> Fresen.	Hm	Na	Caryophyllaceae	Mid, T, D, Xd	Wi
<i>Phlomis herba-venti</i> subsp. <i>pungens</i> (Willd.) Maire ex. DeFilipps	Hm	Na	Lamiaceae	Mid	An
<i>Pimpinella eriocarpa</i> Banks & Sol.	A	Na	Apiaceae	T, D	An
<i>Picris asplenioides</i> L.	A	Na	Compositae	D, Xd	An
<i>Phragmites australis</i> (Cav.) Trin. Ex. Steud.	G, Hm	Na	Poaceae	Mid, T, D, Xd	Wi
<i>Picris amalecitana</i> (Boiss.) Eig.	A	Na	Compositae	Mid, T	An
<i>Phlomis platystegia</i> Post.	Cm	E	Lamiaceae	D	An
<i>Picris galilaea</i> (Boiss.) Eig.	A	E	Compositae	Mid	An
<i>Pimpinella cretica</i> Poiret.	A	Na	Apiaceae	Mid, T, D, Xd	An
<i>Picris damascena</i> Boiss. & Gaill. Ex Boiss. & Gaill.	A	Na	Compositae	D, Xd	An
<i>Phlomis viscosa</i> Poiret.	Cm	Na	Lamiaceae	Mid	An
<i>Pinus brutia</i> Tenore	Tr	Na	Pinaceae	Mid	Wi
<i>Pistacia lentiscus</i> L.	Phs	Na	Anacardiaceae	Mid	Wi
<i>Pinus pinea</i> L.	Tr	Na	Pinaceae	Mid	Wi
<i>Pistacia saportae</i> Burnat	Tr	Na	Anacardiaceae	Mid	Wi
<i>Pinus halepensis</i> Miller	Tr	Na	Pinaceae	Mid	Wi
<i>Pistacia palaestina</i> Boiss.	Phs, Tr	E	Anacardiaceae	Mid	Wi



<i>Pistacia atlantica</i> Desf.	Tr	Na	Anacardiaceae	Mid, T, D, Xd	Wi
<i>Pisum elatius</i> M. Bieb.	A, V	Na	Leguminosae	Mid	An
<i>Prunus arabica</i> (Olivier) Meikle.	Phs	Na	Rosaceae	T	An
<i>Prospero hanburyi</i> (Baker) Speta	G	Na	Asparagaceae	D, Xd	An
<i>Prosopis farcta</i> (Banks et Sol.) Macbride	Cm, Hm, Phs	Na	Leguminosae	Mid, T, D, Xd	An
<i>Prunus dulcis</i> (Miller) D. A. Webb.	Tr	Na	Rosaceae	Mid, T	An
<i>Prunus korshinskyi</i> Hand. Mazz. (<i>Amygdalus korshinskyi</i> (Hand-Mazzetti) Bornm.)	Tr	E	Rosaceae	Mid, T	An
<i>Prunus ursina</i> Kotschy	Tr	Na	Rosaceae	Mid	An
<i>Prunus ramonensis</i> (Danin) Eisenman	Tr	E	Rosaceae	Mid, T	An
<i>Quercus coccifera</i> L. (<i>Quercus calliprinos</i> Webb.)	Tr, Phs	Na	Fagaceae	Mid	Wi
<i>Quercus boissieri</i> Reuter var. <i>latifolia</i> (Boiss.) Zohary	Tr	N	Fagaceae	Mid	Wi
<i>Quercus ithaburensis</i> Decne.	Tr	Na	Fagaceae	Mid	Wi
<i>Suaeda palaestina</i> Eig. & Zohary	Cm	E	Tamaricaceae	D, Xd	An
<i>Ranunculus asiaticus</i> L.	G	Na	Ranunculaceae	Mid, T, D	An
<i>Rhamnus alaternus</i> L.	Tr	Na	Rhamnaceae	Mid	An
<i>Ranunculus marginatus</i> d'Urv	A	Na	Ranunculaceae	Mid	An
<i>Ranunculus millefolius</i> Banks & Sol.	G	Na	Ranunculaceae	Mid, T	An
<i>Reaumuria negevensis</i> Zohary & Danin	Cm	E	Tamaricaceae	D, Xd	An
<i>Ranunculus ophioglossifolius</i> Vill.	A	Na	Ranunculaceae	Mid	An
<i>Rhamnus disperma</i> Ehrenb. Ex. Boiss.	Phs	Na	Rhamnaceae	D, Xd	An
<i>Ranunculus scandicinus</i> (Boiss.) P. H. Davis	A	Na	Ranunculaceae	Mid	An
<i>Rhamnus palaestinus</i> Boiss. (<i>Rhamnus lycioides</i> L.)	Phs	E	Rhamnaceae	Mid, T, D	An
<i>Ranunculus muricatus</i> L.	A	Na	Ranunculaceae	Mid	An
<i>Retama raetam</i> (Forssk.) Webb.	Phs	Na	Leguminosae	Mid, T, D, Xd	An
<i>Ranunculus chius</i> D.C.	A	Na	Ranunculaceae	Mid	An
<i>Rubus sanctus</i> Schreb.	Phs	Na	Rosaceae	Mid, Xd	An
<i>Ranunculus arvensis</i> L.	A	Na	Ranunculaceae	Mid, T	An
<i>Rhagadiolus stellatus</i> (L.) Gaertn.	A	Na	Compositae	Mid, T, D	An
<i>Rhamnus punctata</i> Boiss.	Phs	Na	Rhamnaceae	Mid	An
<i>Rhagadiolus edulis</i> Gaertn.	A	Na	Compositae	Mid	An
<i>Saccharum ravennae</i> (L.) L.	Hm	Na	Poaceae	Mid, T, D, Xd	Wi
<i>Ranunculus peltatus</i> Schrank	HE	Na	Ranunculaceae	Mid	An
<i>Saccharum spontaneum</i> L.	G, Phs	Na	Poaceae	Mid, Xd	Wi
<i>Salsola imbricata</i> Forssk.	Phs	Na	Amaranthaceae	Mid, Xd	Wi
<i>Salvia bracteata</i> Banks & Sol.	Hm	N	Lamiaceae	T	An
<i>Salsola incanescens</i> C. A. Mey.	A	Na	Amaranthaceae	D, Xd	Wi
<i>Salvia dominica</i> L.	Cm	N	Lamiaceae	Mid, T	An
<i>Salsola jordanicola</i> Eig.	A	Na	Amaranthaceae	D, Xd	Wi
<i>Salvia fruticosa</i> Miller	Cm	N	Lamiaceae	Mid	An
<i>Salsola inermis</i> Forssk.	A	Na	Amaranthaceae	D, Xd	Wi
<i>Salvia aegyptiaca</i> L.	Cm	N	Lamiaceae	D, Xd	An
<i>Salsola tragus</i> L.	A	Na	Amaranthaceae	Mid, T, D, Xd	Wi
<i>Salvia ceratophylla</i> L.	Hm	N	Lamiaceae	D	An
<i>Salsola gaetula</i> (Maire) Botsch.	Cm	Na	Amaranthaceae	Xd	Wi
<i>Salvia eigii</i> Zohary	Hm	E	Lamiaceae	Mid	An
<i>Salsola cyclophylla</i> Baker	C	Na	Amaranthaceae	Mid, Xd	Wi
<i>Salvia hierosolymitana</i> Boiss.	Hm	E	Lamiaceae	Mid	An
<i>Salsola schweinfurthii</i> Solms	Cm	N	Amaranthaceae	D, Xd	Wi
<i>Sarcopoterium spinosum</i> (L.) Sp.	Cm	Na	Rosaceae	Mid, T	Wi
<i>Satureja thymbra</i> L.	Cm	Na	Lamiaceae	Mid	An
<i>Satureja thymbriifolia</i> Hedge & Feinbrun	Cm	E	Lamiaceae	D	An
<i>Scaligeria napiformis</i> Grande	Hm	Na	Lamiaceae	Mid	An
<i>Salvia spinosa</i> L.	Hm	Na	Lamiaceae	D, Xd	An
<i>Scrophularia deserti</i> Delile	Hm	Na	Scrophulariaceae	D, Xd	An

Classified Plant Al-Dhahiriya in the South of Palestine

<i>Scrophularia hierochuntina</i> Boiss.	Hm	Na	Scrophulariaceae	Mid	An
<i>Scrophularia hypericifolia</i> Wydler.	Cm	Na	Scrophulariaceae	T, D	An
<i>Sedum palaestinum</i> Boiss.	A	E	Crassulaceae	Mid, T	An
<i>Scandix australis</i> L.	A	Na	Apiaceae	Mid	An
<i>Senecio flavus</i> (Decne.) Schultz. Bip.	A	Na	Compositae	D, Xd	An
<i>Silybum marianum</i> (L.) Gaertn	A	Na	Compositae	Mid, T	An
<i>Senecio leucanthemifolius</i> Poir.	A	Na	Compositae	Om, Mid, T	An
<i>Senecio vulgaris</i> L.	A	Na	Compositae	Mid	An
<i>Silene vivianii</i> Steud.	A	Na	Caryophyllaceae	D, Xd	An
<i>Silene vulgaris</i> (Moench) Garke	A	Na	Caryophyllaceae	Mid, T, D	An
<i>Silene oxyodonta</i> Barb. Boiss. & Barbey	A	E/N	Caryophyllaceae	D, T	An
<i>Senecio coronopifolius</i> Desf.	A	Na	Compositae	D, Xd	An
<i>Sinapis alba</i> L.	A	Na	Brassicaceae	Mid, T	An
<i>Senecio glaucus</i> L.	A	Na	Compositae	D, Xd	An
<i>Sinapis arvensis</i> L.	A	Na	Brassicaceae	Mid, T	An
<i>Solanum angustifolium</i> Mill	A	Na	Apiaceae	Mid	An
<i>Solanum elaeagnifolium</i> Cav.	A	Na	Solanaceae	Mid, T	An
<i>Solanum incanum</i> L.	Cm	Na	Solanaceae	Xd	An
<i>Sonchus microcephalus</i> Mejías	A	Na	Compositae	Sd	An
<i>Solanum sinaicum</i> Boiss.	Cm	N	Solanaceae	T, D, Xd	An
<i>Solanum villosum</i> Miller	Hm	Na	Solanaceae	Mid, T, D	An
<i>Sonchus asper</i> (L.) Hill.	A	Na	Solanaceae	Mid	An
<i>Sonchus maritimus</i> L.	Hm	Na	Compositae	Mid, T, D	An
<i>Stachys palaestina</i> L.	Cm	E	Lamiaceae	Mid	An
<i>Sonchus oleraceus</i> L.	A	Na	Compositae	Mid, T, D, ED	An
<i>Solanum luteum</i> Miller	Hm	Na	Solanaceae	Mid, T, D	An
<i>Stachys viticina</i> Boiss.	Hm	Na	Lamiaceae	Mid	An
<i>Solanum americanum</i> Miller	Hm	Na	Apiaceae	Mid, T, D	An
<i>Tamarix Aphylla</i> (L.) Karsten (<i>Tamarix varticula</i> Vahl.)	Tr	Na	Tamaricaceae	Xd	An
<i>Stachys zoharyana</i> Eig.	A	E	Lamiaceae	Mid	An
<i>Tamarix palaestina</i> Bertol.	Tr	E	Tamaricaceae	T, D, Xd	An
<i>Teucrium capitatum</i> L.	Cm	Na	Lamiaceae	Mid, T, D	An
<i>Tamarix gennessarensis</i> Zohary	Tr	E	Tamaricaceae	T, D, Xd	An
<i>Telmissa microcarpa</i> (Sm.) Boiss.	A	Na	Crassulaceae	Mid, T, D	An
<i>Tamarix jordanis</i> Boiss.	Tr	E	Tamaricaceae	Mid, T, D, Xd	An
<i>Teucrium creticum</i> L.	Cm	Na	Lamiaceae	Mid	An
<i>Teucrium divaricatum</i> Sieber ex. Heldr.	Cm	Na	Lamiaceae	Mid	An
<i>Tamarix negevensis</i> Zohary	Tr	E	Tamaricaceae	D, Xd	An
<i>Teucrium montbretii</i> Benth.	Hm	Na	Lamiaceae	T	An
<i>Trichodesma boissieri</i> Post.	Hm	Na	Boraginaceae	T, Xd	An
<i>Teucrium procerum</i> Boiss. & Blanche	Hm	Na	Lamiaceae	Mid	An
<i>Trifolium argutum</i> Sol.	A	Na	Leguminosae	Mid, T	An
<i>Teucrium spinosum</i> L.	A	Na	Lamiaceae	Mid	An
<i>Trifolium campestre</i> Schreb.	A	Na	Leguminosae	Mid, T	An
<i>Thymbra capitata</i> (L.) Cav.	Cm	Na	Lamiaceae	Mid	An
<i>Tordylium aegyptiacum</i> Lam.	A	Na	Apiaceae	Mid, T	An
<i>Tribulus terrestris</i> L.	A	Na	Zygophyllaceae	Mid, T, D, Xd	An
<i>Trichodesma africanum</i> (L.) Sm.	A	Na	Boraginaceae	D, Xd	An
<i>Teucrium scordium</i> L.	Hm	Na	Lamiaceae	Mid	An
<i>Tricholaena teneriffae</i> (L. f.) Link.	Hm	Na	Poaceae	Mid, T, D, Xd	Wi
<i>Trifolium alexandrinum</i> L.	A	E/N	Leguminosae	Mid	An
<i>Teucrium parviflorum</i> Schreb.	Hm	Na	Lamiaceae	T	An
<i>Trifolium dasyurum</i> C. Presl.	A	Na	Fagaceae	Mid, T	An
<i>Urtica urens</i> L.	A	Na	Urticaceae	Mid, T	Wi
<i>Trifolium dichroanthum</i> Boiss.	A	Na	Fagaceae	Mid, T	An



<i>Urtica pilulifera</i> L.	A	Na	Urticaceae	Mid, T	Wi
<i>Trifolium echinatum</i> M. Bieb.	A	Na	Fagaceae	Mid	An
<i>Trifolium eriosphaerum</i> Boiss.	A	E/N	Fagaceae	Mid, T	An
<i>Trifolium arvense</i> L.	A	Na	Fagaceae	Mid	An
<i>Verbascum agrimoniifolium</i> Huber-Morath	Hm	Na	Scrophulariaceae	Mid, T	An
<i>Silene palaestina</i> Boiss.	A	E	Caryophyllaceae	Mid, T, D	An
<i>Teucrium parviflorum</i> Schreb.	Hm	Na	Lamiaceae	T	An
<i>Trifolium prophetarum</i> M. Hossain	A	E	Leguminosae	Mid, T	An
<i>Trifolium purpureum</i> Loisel.	A	Na	Fagaceae	Mid, T	An
<i>Verbascum fruticosum</i> Post.	Cm	Na	Scrophulariaceae	T, D, Xd	An
<i>Trigonella arabica</i> Delile	A	Na	Fagaceae	D, Xd	An
<i>Trigonella arabica</i> Delile	A	Na	Leguminosae	D, Xd	An
<i>Trigonella schlumbergeri</i> Boiss.	A	Na	Leguminosae	Mid, D	An
<i>Verbascum galilaeum</i> Boiss.	Hm	E	Scrophulariaceae	Mid	An
<i>Trifolium campestre</i> Schreb.	A	Na	Fagaceae	Mid, T	An
<i>Trifolium tomentosum</i> L.	A	Na	Leguminosae	Mid, T, D	An
<i>Verbascum eremobium</i> Murb.	Cm	Na	Scrophulariaceae	D, Xd	An
<i>Trifolium clypeatum</i> L.	A	Na	Fagaceae	Mid	An
<i>Verbascum gaillardotii</i> Boiss.	Hm	Na	Scrophulariaceae	Mid	An
<i>Trifolium dichroanthum</i> Boiss.	A	Na	Fagaceae	Mid, T	An
<i>Verbascum jordanicum</i> Murb.	Hm	N/E	Scrophulariaceae	T, D	An
<i>Vicia sativa</i> L.	A, V	Na	Leguminosae	Mid, T	An
<i>Verbascum orientale</i> (L.) All.	A	Na	Scrophulariaceae	Mid, T	An
<i>Vulpia ciliata</i> Dumort.	A	Na	Poaceae	Mid, T	Wi
<i>Verbascum sinuatum</i> L.	Hm	N/E	Scrophulariaceae	Mid, T	An
<i>Vulpia fasciculata</i> (Forssk.) Samp.	A	Na	Poaceae	Mid	Wi
<i>Veronica arvensis</i> L.	A	Na	Plantaginaceae	Mid	An
<i>Veronica cymbalaria</i> Bodard.	A	Na	Plantaginaceae	Mid, T	An
<i>Verbascum tiberiadis</i> Boiss.	Hm	Na	Scrophulariaceae	Mid, T	An
<i>Veronica panormitana</i> Tineo ex. Guss.	A	Na	Plantaginaceae	Mid, T	An
<i>Vicia peregrina</i> L.	A, V	Na	Leguminosae	Mid, T	An
<i>Veronica hederifolia</i> L.	A	Na	Plantaginaceae	Mid	An
<i>Vicia sericocarpa</i> Fenzl.	A, V	Na	Leguminosae	Mid, T	An
<i>Vulpia brevis</i> Boiss. & Kotschy	A	Na	Poaceae	D	Wi
<i>Verbascum sinaiticum</i> Benth.	Hm	N/E	Scrophulariaceae	T, D	An
<i>Vulpia myuros</i> (L.) C. C. Gmel.	A	Na	Poaceae	Mid, TZ	Wi
<i>Xanthium spinosum</i> L.	A	Na	Compositae	Mid	Wi
<i>Verbascum levanticum</i> I. K. Ferguson	Hm	Na	Scrophulariaceae	Mid	An
<i>Vulpia muralis</i> (Kunth) Nees	A	Na	Poaceae	Mid	Wi
<i>Ziziphora capitata</i> L.	A	Na	Lamiaceae	Mid	An
<i>Vulpia unilateralis</i> (L.) Stace	A	Na	Poaceae	T	Wi
<i>Xanthium strumarium</i> L.	A	Na	Compositae	Mid, T	Wi
<i>Vulpia pectinella</i> (Delile) Boiss.	A	Na	Poaceae	D	Wi
<i>Ziziphora tenuior</i> L.	A	Na	Lamiaceae	T, D	An
<i>Haloxylon persicum</i> Bunge	Phs	Na	Amaranthaceae	Xd	Wi
<i>Ziziphus spina-christi</i> (L.) Desf.	Tr	Na	Rhamnaceae	Mid, T, D, Xd	An
<i>Cupressus sempervirens</i> L.	Tr	Na	Cupressaceae	Mid	Wi
<i>Haloxylon negevensis</i> (Iljin & Zohary) L.Boulos	Cm	E	Amaranthaceae	D, Xd	Wi
<i>Ziziphus lotus</i> (L.) Lam.	Phs	Na	Rhamnaceae	T	An
<i>Haloxylon salicornicum</i> (Moq.) Bunge ex Boiss.	Cm	Na	Amaranthaceae	Xd	Wi
<i>Ziziphus lotus</i> (L.) Lam.	Phs	Na	Rhamnaceae	T	An
<i>Opuntia robusta</i> J.C. Wendl.	Cm	Na	Cactaceae	Mid, T, D, Xd	Wi
<i>Morus nigra</i> L	Tr	Na	Moraceae	Mid, T	Wi
<i>Opuntia ficus indica</i> (L.) Miller	Cm	Na	Cactaceae	Mid, T, D, Xd	Wi
<i>Cutandia dichotoma</i> (Forssk.) Trab.	A	N	Poaceae	D, Xd	Wi
<i>Cuscuta planiflora</i> Ten.	A, P, V	N	Convolvulaceae	Mid, T	An
<i>Cyclamen persicum</i> Miller	G	N	Primulaceae	Mid, T	An
<i>Cutandia maritime</i> (L.) Banth.	A	N	Poaceae	Mid	Wi
<i>Rumex cyprius</i> Murb.	A	N	Polygonaceae	T, D, Xd	Wi

Classified Plant Al-Dhahiriya in the South of Palestine

<i>Morus alba</i> L.	Phs, Tr	Na	Moraceae	Mid, T	Wi
<i>Cymbalaria muralis</i> P. Gaertn. B. Mey. & Scherb.	Hm	N	Plantaginaceae	Mid	An
<i>Cymbolaena griffithii</i> (A.Gray) Wagenitz	A	N	Compositae	T	Wi
<i>Cymodocea nodosa</i> (Ucria) Asch.	HE	N	Cymodoceaceae	Mid	Wi
<i>Cynanchum acutum</i> L.	V, Phs	N	Apocynaceae	Mid, T	An
<i>Cynara syriaca</i> Boiss.	Hm	Na	Compositae	Mid	An
<i>Reseda urnigera</i> Webb.	Hm	Na	Resedaceae	D, Xd	An
<i>Reseda lutea</i> L.	A	Na	Resedaceae	Mid, T, D, Xd	An
<i>Reseda luteola</i> L.	A	Na	Resedaceae	Mid, T, D	An
<i>Rhus coriaria</i> L.	Phs	Na	Anacardiaceae	Mid	An
<i>Rhus tripartita</i> (Ucria) Grande	Phs	Na	Anacardiaceae	T, D	Wi
<i>Rubus sanctus</i> Schreb.	Phs	Na	Rosaceae	M, Xd	An
<i>Ruppia maritima</i> L.	HE	Na	Ruppiaceae	Mid, D, Xd	Wi
<i>Rumex vesicarius</i> L.	A	Na	Polygonaceae	D, Xd	Wi
<i>Ruppia cirrhosa</i> (Petagna) Grande	HE	Na	Ruppiaceae	Mid, D, Xd	Wi
<i>Rumex bucephalophorus</i> L.	A	Na	Polygonaceae	Mid, T, D	Wi
<i>Rostraria pumila</i> (Desf.) Tzvelev	A	Na	Poaceae	D, Xd	Wi
<i>Rostraria smyrnacea</i> (Trin.) H. Scholz.	A	Na	Poaceae	Mid, T, D	Wi
<i>Rosularia lineata</i> (Boiss.) A. Berger	Hm	Na	Crassulaceae	Mid, T, D	An
<i>Salvia judaica</i> Boiss.	Hm	E	Lamiaceae	Mid	An

Species	Life form	Status	Family	Climatology	Pollinization
<i>Aaronsohnia factorovskiyi</i> Warb. & Eig.	A	N	Compositae	Ds, Sd	An
<i>Abutilon fruticosum</i> Guill. & Perr.	Ch	N	Malvaceae	Ds, Sd	An
<i>Abutilon hirtum</i> (Lam.) Sweet.	Ch	N	Malvaceae	Sd	An
<i>Abutilon indicum</i> (L.) Sweet.	Ch	N	Malvaceae	ds, Sd	An
<i>Abutilon pannosum</i> (G.Forst.) Schldtl.	Phs	N	Malvaceae	Sd	An
<i>Abutilon theophrasti</i> Medik	A	N	Malvaceae	Md	An
<i>Acacia farnesiana</i> (L.) Willd.	Tr	N	Leguminosae	Md	An
<i>Acacia raddiana</i> Savi.	Tr	N	Leguminosae	Xd	An
<i>Acacia saligna</i> (Labill.) Wendl. f.	Tr	N	Leguminosae	Md, Tz	An
<i>Acacia tortilis</i> (Forssk.) Hayne	Tr	N	Leguminosae	Sd	An
<i>Acanthus syriacus</i> Boiss.	Hem	N	Acanthaceae	Md	An
<i>Achillea arabica</i> Kotschy	Hem	N	Compositae	Md, Tz	An
<i>Achillea cretica</i> L.	Hem	N	Compositae	Ds, Sd	An
<i>Achillea fragrantissima</i> Forssk. Sch.Bip.	Hem	N	Compositae	Ds, Sd	An
<i>Achillea aleppica</i> DC.	Ch	N	Compositae	Tz	An
<i>Achyranthes aspera</i> L.	Hem	N	Amaranthaceae	Md, Ds	An
<i>Adiantum capillus- veneris</i> L.	Hem	N	Pteridaceae	Md, Tz, Ds, Sd	Fern
<i>Adonis aestivalis</i> L.	A	N	Ranunculaceae	Md, Tz, Ds	An
<i>Adonis dentata</i> Del.	A	N	Ranunculaceae	Tz, Ds	An
<i>Adonis microcarpa</i> DC.	A	N	Ranunculaceae	Md, Tz	An
<i>Aegilops bicornis</i> (Forssk.) Jaub. & Spach	A	N	Poaceae	Tz, Ds	Wd
<i>Aegilops crassa</i> Boiss.	A	N	Poaceae	Ds	Wd
<i>Aegilops geniculata</i> Roth.	A	N	Poaceae	Md, Tz, Ds	Wd
<i>Aegilops kotschy</i> Boiss.	A	N	Poaceae	Ds, Sd	Wd
<i>Aegilops longissima</i> Schweinf. & Muschl.	A	N	Poaceae	Md, Tz	Wd
<i>Aegilops lorentii</i> Hochst.	A	N	Poaceae	Md, Tz	Wd
<i>Aegilops peregrina</i> (Hack.) Maire & Weiller	A	N	Poaceae	Md, Tz	Wd
<i>Aegilops searsii</i> Feldman & Kislev	A	N	Poaceae	Tz	Wd
<i>Aegilops triuncialis</i> L.	A	N	Poaceae	Tz	Wd
<i>Aeluropus lagopoides</i> (L.) Thwaites	Hem	N	Poaceae	Tz, Ds, Sd	Wd
<i>Aeluropus littoralis</i> (Gouan)Parl.	Hem	N	Poaceae	Md, Ds, Sd	Wd
<i>Aerva javanica</i> (Burm.f.) Juss. ex Schult.	Ch	N	Poaceae	Ds, Sd	Wd
<i>Ailanthus altissima</i> (Mill.) Swingle	Tr	N	Simarubaceae	Md, Tz	An
<i>Ainsworthia cordata</i> (Jacq.) Boiss.	A	E	Apiaceae	Md, Tz	An
<i>Ainsworthia trachycarpa</i> Boiss.	A	N	Apiaceae	Md, Tz	An
<i>Aizoon hispanicum</i> L.	A	N	Aizoaceae	Tz, Ds, Sd	An
<i>Aizoon canariense</i> L.	A	N	Aizoaceae	Ds, Sd	An
<i>Ajuga chamaepitys</i> (L.) Schreber	Hem	N	Lamiaceae	Md, Tz, Ds	An
<i>Ajuga iva</i> (L.) Schreber	Ch	N	Lamiaceae	Tz	An
<i>Ajuga orientalis</i> L.	Hem	N	Lamiaceae	Md, Tz	An
<i>Alcea acaulis</i> (Cav.) Alef.	Ch	N	Malvaceae	Md, Tz, Ds	An
<i>Alcea digitata</i> Alef.	Hem	N	Malvaceae	Md, Tz	An
<i>Alcea galilaea</i> Zohary	Hem	E	Malvaceae	Md, Tz	An
<i>Alcea setosa</i> (Boiss.) Alef.	Hem	N	Malvaceae	Md, Tz	An
<i>Alcea striata</i> (DC.) Alef.	Hem	N	Malvaceae	Sd	An



<i>Alhagi maurorum</i> Medik.	Hem	N	Leguminosae	Md, Tz, Ds, Sd	An
<i>Alkanna orientalis</i> (L.) Boiss.	Ch	N	Boraginaceae	Md, Ds	An
<i>Alkanna strigosa</i> Boiss. & Hohen.	Ch	N	Boraginaceae	Md, Tz	An
<i>Alkanna tinctoria</i> (L.) Tausch	Ch	N	Boraginaceae	Md, Tz	An
<i>Allium ampeloprasum</i> L.	G	N	Amaryllidaceae	Md, Tz	An
<i>Allium artemisietorum</i> Eig. & Feinbr.	G	N	Amaryllidaceae	Ds, Sd	An
<i>Allium ascalonicum</i> L. (<i>Allium hierochuntinum</i> Boiss.)	G	E	Amaryllidaceae	Tz	An
<i>Allium aschersonianum</i> Barbey	G	N	Amaryllidaceae	Tz, Ds	An
<i>Allium curtum</i> Boiss. & Gaill.	G	N	Amaryllidaceae	Md, Tz, Ds	An
<i>Allium daninianum</i> Brullo, Pavone & Salmeri	G	E	Amaryllidaceae	Md, Tz	An
<i>Allium decaisnei</i> C. Presl	G	N	Amaryllidaceae	Ds	An
<i>Allium desertorum</i> Forssk.	G	N	Amaryllidaceae	Ds, Sd	An
<i>Allium dictyoprasum</i> C. A. Meyer ex Kunth	G	N	Amaryllidaceae	Tz, Ds	An
<i>Allium erdelii</i> Zucc.	G	N	Amaryllidaceae	Md, Tz	An
<i>Allium negevense</i> Kollmann	G	E	Amaryllidaceae	Ds	An
<i>Allium orientale</i> Boiss.	G	N	Amaryllidaceae	Tz	An
<i>Allium pallens</i> L.	G	N	Amaryllidaceae	Md, Tz, Ds	An
<i>Allium paniculatum</i> L. sub.	G	N	Amaryllidaceae	Md, Tz	An
<i>Allium papillare</i> Boiss.	G	E	Amaryllidaceae	Ds	An
<i>Allium qasyunense</i> Mouterde	G	E	Amaryllidaceae	Tz	An
<i>Allium rothii</i> Zucc.	G	N	Amaryllidaceae	Ds	An
<i>Allium truncatum</i> (Feinbr.) Kollmann & D. Zohary	G	N	Amaryllidaceae	Md, Tz	An
<i>Althaea hirsuta</i> L.	A	N	Malvaceae	Md	An
<i>Althaea ludwigii</i> L.	A	N	Malvaceae	Sd, Xd	An
<i>Alyssum damascenum</i> Boiss. et Gaill	A	N	Brassicaceae	Tz, Ds	An
<i>Alyssum simplex</i> Rudolph	A	N	Brassicaceae	Md, Tz	An
<i>Alyssum strigosum</i> Banks & Sol.	A	N	Brassicaceae	Md, Tz	An
<i>Alyssum szovitsianum</i> Fisch. & C.A.Mey.	A	N	Brassicaceae	Md	An
<i>Amaranthus graecizans</i> L.	A	N	Amaranthaceae	Md, Tz, Ds, Sd	Wd
<i>Amaranthus viridis</i> L.	A	N	Amaranthaceae	Md, Tz, Sd, Xd	Wd
<i>Ammi majus</i> L.	A	N	Apiaceae	Md, Tz	An
<i>Ammi visnaga</i> (L.) Lam.	A	N	Apiaceae	Md	An
<i>Ammochloa palaestina</i> Boiss.	A	E	Poaceae	Tz, Ds	Wd
<i>Anabasis articulata</i> (Forsk.) Moq.	Ch	N	Amaranthaceae	Ds, Sd	Wd
<i>Anabasis setifera</i> Moq.	Ch	N	Amaranthaceae	Ds, Sd	Wd
<i>Anabasis syriaca</i> Iljin	Ch	N	Amaranthaceae	Ds, Sd	Wd
<i>Anacyclus radiatus</i> Loisel.	A	N	Compositae	Md	An
<i>Anagallis arvensis</i> L.	A	N	Primulaceae	Md, Tz, Ds, Sd	An
<i>Anagyris foetida</i> L.	Phs	N	Leguminosae	Md, Tz	An
<i>Anarrhinum forskahlii</i> (J.F. Gmel.) Cuf.	Ch	N	Plantaginaceae	Md, Tz	An
<i>Anastatica hierochuntica</i> L.	A	N	Brassicaceae	Sd	An
<i>Anchusa aegyptiaca</i> (L.) DC.	A	N	Boraginaceae	Md, Tz, Ds	An
<i>Anchusa azurea</i> Miller	H	N	Boraginaceae	Md	An
<i>Anchusa milleri</i> Lam. ex. Spreng.	A	N	Boraginaceae	Ds, Sd	An
<i>Anchusa strigosa</i> Banks & Sol.	H	N	Boraginaceae	Md, Tz	An
<i>Anchusa undulata</i> L.	Hem	N	Boraginaceae	Md	An
<i>Andrachne aspera</i> Spreng.	Ch	N	Phyllanthaceae	Sd	An
<i>Andrachne telephioides</i> L.	Hem	N	Phyllanthaceae	Md, Tz, Ds	An
<i>Androcymbium palaestinum</i> Baker	G	E	Colchicaceae	Tz, Ds, Sd	An
<i>Androsace maxima</i> L.	A	N	Primulaceae	Md, Tz, Ds	An
<i>Anemone coronaria</i> L.	G	N	Ranunculaceae	Md, Tz, Ds	An
<i>Anethum graveolens</i> L.	A	N	Apiaceae	Md	An
<i>Ankyropetalum gypsophiloides</i> Fenzl	Ch	N	Caryophyllaceae	Md, Tz, Ds	An
<i>Anthemis bormmuelleri</i> Stoj. & Acht.	A	N	Compositae	Md	An
<i>Anthemis cornucopiae</i> Boiss.	A	N	Compositae	Md	An
<i>Anthemis eliezrae</i> Eig.	A	N	Compositae	Ds	An
<i>Anthemis hebronica</i> Boiss. & Kotschy	A	E	Compositae	Tz	An
<i>Anthemis hyalina</i> DC.	A	N	Compositae	Md	An
<i>Anthemis philistea</i> Boiss	A	E	Compositae	Md	An
<i>Anthemis leucanthemifolia</i> Boiss. & Blanche	A	E	Compositae	Md, Tz	An
<i>Anthemis maris-mortui</i> Eig.	A	E	Compositae	Ds, Sd	An
<i>Anthemis melampodina</i> Delile	A	N	Compositae	Ds, Sd	An
<i>Anthemis pseudocotula</i> Boiss.	A	N	Compositae	Md, Tz, Ds	An
<i>Anthemis zoharyana</i> Eig.	A	E	Compositae	Ds	An
<i>Anthepphara laevis</i> Stapf. & C. E. Hubb	A	N	Poaceae	Sd	Wd

Classified Plant Al-Dhahiriya in the South of Palestine

<i>Anthriscus lamprocarpa</i> Boiss.	Hem	N	Apiaceae	Md	An
<i>Apium graveolens</i> L.	A	N	Apiaceae	Md	Wd
<i>Apium nodiflorum</i> (L.) Lag.	Hem	N	Apiaceae	Md	An
<i>Arabis aucheri</i> Boiss.	A	N	Brassicaceae	Md, Tz	An
<i>Arabis nova</i> Vill.	A	N	Brassicaceae	Ds	An
<i>Arabis verna</i> (L.) R.Br.	A	N	Brassicaceae	Md	An
<i>Araujia sericifera</i> Brot.	C,V	N	Apocynaceae	Md	An
<i>Roemeria hybrida</i> (L.) DC.	A	N	Papaveraceae	Tz, Ds, Sd	An
<i>Arenaria deflexa</i> Decaisne	Ch,Hem	N	Caryophyllaceae	Md	An
<i>Arenaria serpyllifolia</i> subsp. <i>leptoclados</i> (Rchb.) Nyman	A	N	Caryophyllaceae	Md, Tz, Ds	An
<i>Argemone mexicana</i> L.	A	N	Papeveraceae	Md, Tz	An
<i>Argyrolobium uniflorum</i> (Decne.) Jaub. & Spach	C	N	Leguminosae	Tz, Ds	An
<i>Arisarum vulgare</i> Trag. Tozz.	G	N	Araceae	Md, Tz	An
<i>Aristida adscensionis</i> L.	A, Hem	N	Poaceae	Sd	An
<i>Aristida sieberiana</i> Trin.	Hem	E	Poaceae	Md	Wd
<i>Aristolochia bottae</i> Jaub. & Spach	Hem	N	Aristolochiaceae	Md	An
<i>Aristolochia paecilantha</i> Boiss.	Hem	N	Aristolochiaceae	Md	An
<i>Aristolochia parvifolia</i> Sm.	H, V	E	Aristolochiaceae	Md, Tz	An
<i>Aristolochia sempervirens</i> L.	H, V	N	Aristolochiaceae	Md	An
<i>Arnebia decumbens</i> (Vent.) Coss. & Kralik	A	N	Boraginaceae	Ds, Sd	An
<i>Arnebia linearifolia</i> A.DC.	A	N	Boraginaceae	Ds, Sd	An
<i>Arrhenatherum palaestinum</i> Boiss.	G	E	Poaceae	Md, Tz	An
<i>Artemisia squamata</i> L.	A	N	Apiaceae	Md, Tz	An
<i>Artemisia herba-alba</i> Asso	Ch	N	Compositae	Ds, Sd	An
<i>Artemisia monosperma</i> Delile	Ch	N	Compositae	Md, Tz, Ds, Sd	An
<i>Arthrocnemum macrostachyum</i> (Moric.) K.Koch	Ch	N	Amaranthaceae	Md, Ds, Sd	An
<i>Arum dioscoridis</i> Sm.	G	N	Araceae	Md	An
<i>Arum palaestinum</i> Boiss.	G	E	Araceae	Md	Wd
<i>Arundo donax</i> L.	G, Phs	N	Poaceae	Md, Tz	An
<i>Arundo plinii</i> Turra	G, Phs	N	Poaceae	Md, Tz, Ds, Sd	Wd
<i>Asparagus aphyllus</i> L.	G,V	N	Asparagaceae	Md	Wd
<i>Asparagus horridus</i> L.	G,V	N	Asparagaceae	Md, Tz, Ds, Sd	An
<i>Asparagus palaestinus</i> Baker	G,V	E	Asparagaceae	Md, Tz	Wd
<i>Asperugo procumbens</i> L.	A	N	Asparagaceae	Tz, Ds	An
<i>Asperula arvensis</i> L.	A	N	Rubiaceae	Md, Tz	An
<i>Asphodeline brevicaulis</i> (Bertol.) J.Gay ex Baker	Hem	N	Xanthorrhoeaceae	Tz	An
<i>Asphodeline lutea</i> (L.) Reichenb	Hem	N	Xanthorrhoeaceae	Md, Ds	An
<i>Asphodelus fistulosus</i> L.	Hem	N	Xanthorrhoeaceae	Md, Tz, Ds	An
<i>Asphodelus ramosus</i> L.	Hem	N	Xanthorrhoeaceae	Md, Tz, Ds	An
<i>Asphodelus tenuifolius</i> Cav.	A	N	Xanthorrhoeaceae	Tz, Ds, Sd	An
<i>Asphodelus viscidulus</i> Boiss.	G	N	Xanthorrhoeaceae	Sd	An
<i>Asplenium sagittatum</i> (DC.) Bunge, A. J.	Hem	N	Aspleniaceae	Md	Fern
<i>Aster subulatus</i> (Michx.) Hort. ex Michx.	A	N	Compositae	Md, Tz, Ds, Sd	An
<i>Asteriscus aquaticus</i> (L.) Less.	A	N	Compositae	Md, Tz	An
<i>Asteriscus graveolens</i> (Forssk.) Less.	Ch	N	Compositae	Ds, Sd	An
<i>Astomaea seselifolia</i> (A.DC.) Rauschert	G	N	Apiaceae	Md, Tz, Ds	An
<i>Astracantha bethlehemitica</i> (Boiss.) Podl.	Ch	E	Leguminosae	Tz, Ds	An
<i>Astracantha deinacantha</i> (Boiss.) Podlech	Ch	N	Leguminosae	Md, Tz	An
<i>Astragalus allepicus</i> Boiss.	H	N	Leguminosae	Tz	An
<i>Astragalus annularis</i> Forssk.	A	N	Leguminosae	Ds, Sd	An
<i>Astragalus asterias</i> Steven	A	N	Leguminosae	Tz, Ds, Sd	An
<i>Astragalus berytheus</i> Boiss. & Blanche	A	N	Leguminosae	Md, Tz	An
<i>Astragalus boeticus</i> L.	A	N	Leguminosae	Md, Tz, Ds	An
<i>Astragalus bombycinus</i> Boiss.	A	N	Leguminosae	Ds, Sd	An
<i>Astragalus brachystachys</i> DC.	Hem	N	Leguminosae	Tz	An
<i>Astragalus callichrous</i> Boiss.	A	N	Leguminosae	Tz	An
<i>Astragalus campylorrhynchus</i> Fisch. & C.A.Mey.	A	N	Leguminosae	Ds	An
<i>Astragalus caprinus</i> L.	Hem	N	Leguminosae	Ds	An
<i>Astragalus corrugatus</i> Bertol.	A	N	Leguminosae	Ds, Sd	An
<i>Astragalus cretaceus</i> Boiss. & Kotschy	Hem	N	Leguminosae	Tz	An
<i>Astragalus dactylocarpus</i> Boiss.	Hem	N	Leguminosae	Sd	An
<i>Astragalus epiglottis</i> L.	A	N	Leguminosae	Md, Tz	An
<i>Astragalus fruticosus</i> Forssk	Hem	N	Leguminosae	Tz, Ds	An
<i>Astragalus guttatus</i> Banks & Sol.	A	N	Leguminosae	Tz, Ds	An
<i>Astragalus hispidulus</i> DC.	A	N	Leguminosae	Ds	An



<i>Astragalus intercedens</i> Rech.f.	A	N	Leguminosae	Sd	An
<i>Astragalus kahiricus</i> DC.	Hem	N	Leguminosae	Ds, Sd	An
<i>Astragalus palaestinus</i> Eig.	Hem	E	Leguminosae	Md, Tz	An
<i>Astragalus pehuenches</i> Niederl.	Hem	N	Leguminosae	Md, Tz	An
<i>Astragalus peregrinus</i> Vahl.	A	N	Leguminosae	Md, Tz	An
<i>Astragalus sanctus</i> Boiss.	Ch	N	Leguminosae	Ds, Sd	An
<i>Astragalus scorpioides</i> Willd.	A	N	Leguminosae	Tz	An
<i>Astragalus spinosus</i> (Forssk.) Muschl.	Ch	N	Leguminosae	Ds, Sd	An
<i>Astragalus tribuloides</i> Delile	A	N	Leguminosae	Ds, Sd	An
<i>Atractylis cancellata</i> L.	A	N	Compositae	Md, Tz	An
<i>Atractylis carduus</i> (Forssk.) C.Chr.	Ch	N	Compositae	Md, Tz, Ds, Sd	An
<i>Atractylis phaeolepis</i> Pomel	Ch	N	Compositae	Sd	An
<i>Atractylis prolifera</i> Boiss.	A	N	Compositae	Ds	An
<i>Atractylis serratuloides</i> (Cass.) DC.	Ch	N	Compositae	Tz, Ds	An
<i>Atriplex glauca</i> L.	Ch	N	Amaranthaceae	Ds, Sd	Wd
<i>Atriplex halimus</i> L.	Phs	N	Amaranthaceae	Tz, Ds, Sd	Wd
<i>Atriplex holocarpa</i> F. Muell.	A	N	Amaranthaceae	Ds, Sd	Wd
<i>Atriplex lasiantha</i> Boiss.	Ch,A	N	Amaranthaceae	Mz, Tz, Ds	Wd
<i>Atriplex leucoclada</i> Boiss. var. <i>leucoclada</i>	Ch	N	Amaranthaceae	Tz, Ds, Sd	Wd
<i>Atriplex semibaccata</i> R.Br.	Ch	N	Amaranthaceae	Md, Tz, Ds, Sd	Wd
<i>Atriplex suberecta</i> Verd.	A	N	Amaranthaceae	Ds, Sd	Wd
<i>Atriplex tatarica</i> L.	A	N	Amaranthaceae	Mz, Tz, Ds	Wd
<i>Avena barbata</i> Pott ex Link	A	N	Poaceae	Mz, Tz	Wd
<i>Avena clauda</i> Durieu	A	N	Poaceae	Mz, Tz	Wd
<i>Avena sterilis</i> L.	HE	N	Poaceae	Md, Tz, Ds, Sd	Wd
<i>Balanites aegyptiaca</i> (L.) Delile	Tr	N	Zygophyllaceae	Tz, Ds, Sd	An
<i>Ballota philistaea</i> Bornm.	Ch	E	Lamiaceae	Md	An
<i>Ballota undulata</i> (Sieber ex. Fresen.) Benth	Ch	N	Lamiaceae	Mz, Tz, Ds	An
<i>Bassia arabica</i> (Boiss.) Maire & Weiller	Ch	N	Amaranthaceae	Ds,Sd	Wd
<i>Bassia eriophora</i> (Schrad.) Asch.	A	N	Amaranthaceae	Ds,Sd	Wd
<i>Bassia indica</i> (Wight) A.J.Scott.	A	N	Amaranthaceae	Tz, Ds, Sd	Wd
<i>Bassia muricata</i> (L.) Asch.	A	N	Amaranthaceae	Ds, Sd	Wd
<i>Bassia scoparia</i> (L.) A.J.Scott.	A	N	Amaranthaceae	Md, Tz	Wd
<i>Bellardia trixago</i> (L.) All.	P	N	Orobanchaceae	Md	An
<i>Bellevalia desertorum</i> Eig. & Feinbrun	G	N	Asparagaceae	Ds, Sd	An
<i>Bellevalia eigii</i> Feinbrun	G	E	Asparagaceae	Tz, Ds	An
<i>Calendula arvensis</i> M. Bieb.	A	N	Compositae	Md, Tz, Ds, Sd	An
<i>Calendula pachysperma</i> Zohary	A	E	Compositae	Tz	An
<i>Calendula Palaestina</i> Boiss.	A	E	Compositae	Md	An
<i>Calendula tripterocarpa</i> Rupr.	A	N	Compositae	Sd	An
<i>Calepina irregularis</i> (Asso)Thell.	A	N	Brassicaceae	Md, Tz	An
<i>Calicotome villosa</i> (Poir.) Link.	Phs	N	Leguminosae	Md, Tz	An
<i>Calligonum comosum</i> L'Hér.	Phs	N	Polygonaceae	Ds, Sd	An
<i>Callipeltis aperta</i> Boiss. & Buhse	A	N	Rubiaceae	Ds, Sd	Wd
<i>Callipeltis cucullaria</i> (L.) DC.	A	N	Rubiaceae	Md, Tz, Ds	Wd
<i>Callipeltis factorovskiyi</i> (Eig.) Ehrend.	A	N	Rubiaceae	Tz	Wd
<i>Calotropis procera</i> (Aiton) Aiton f.	Tr	N	Apocynaceae	Ds, Sd	An
<i>Campanula sulphurea</i> Boiss.	A	N	Campanulaceae	Md, Tz, Ds, Sd	An
<i>Capparis aegyptia</i> Lam.	Ch, PhS	N	Capparaceae	Ds, Sd	An
<i>Capparis decidua</i> (Forssk.) Edgew.	Tr	N	Capparaceae	Sd	An
<i>Capparis sicula</i> Duh.	Ch	N	Capparaceae	Md, Tz	An
<i>Capparis spinosa</i> L.	Ch, Hem	N	Brassicaceae	Mz, Tz, Ds	An
<i>Capsella bursa-pastoris</i> (L.) Medik.	A	N	Brassicaceae	Mz, Tz, Ds	An
<i>Capsella rubella</i> Reuter	Hem	N	Brassicaceae	Mz, Tz	An
<i>Caralluma europaea</i> (Guss.) N. E. Brown var. <i>judaica</i> Zohary	Hem	N	Apocynaceae	Mz, Tz, Ds	An
<i>Caralluma sinaica</i> (Decne.) A.Berger	Hem	E	Apocynaceae	Sd	An
<i>Cardamine hirsuta</i> L.	A	N	Brassicaceae	Md	An
<i>Cardopatum corymbosum</i> (L.) Pers.	Hem	N	Compositae	Md	An
<i>Carduus argentatus</i> L.	A	N	Compositae	Mz, Tz, Ds	An
<i>Carduus getulus</i> Pomel.	A	N	Compositae	Ds, Sd	An
<i>Carduus pycnocephalus</i> subsp. <i>marmoratus</i> (Boiss. & Heldr.) P.H.Davis	A	N	Compositae	Md, Ds, Sd	An
<i>Carthamus glaucus</i> M.Bieb.	A	N	Compositae	Md, Tz	An
<i>Carthamus nitidus</i> Boiss.	A	N	Compositae	Tz, Ds, Sd	An

Classified Plant Al-Dhahiriya in the South of Palestine

<i>Carthamus tenuis</i> (Boiss. & Blanche) Bormm.	A	N	Compositae	Md, Tz	An
<i>Centaurea aegyptiaca</i> L.	Ch	N	Compositae	Ds, Sd	An
<i>Centaurea benedicta</i> (L.) L.	A	N	Compositae	Mz, Tz, Ds	An
<i>Centaurea lanulata</i> Eig.	Hem	N	Compositae	Ds, Sd	An
<i>Centaurea pallescens</i> Delile	A	N	Compositae	Ds, Sd	An
<i>Centaurea procurrans</i> Sieber ex. Spreng.	Ch	N	Compositae	Md, Tz	An
<i>Centaurea rigida</i> Banks & Sol.	Hem	N	Compositae	Tz	An
<i>Chaetosciadium trichospermum</i> (L.) Boiss.	A	N	Apiaceae	Mz, Tz, Ds	An
<i>Chardinia orientalis</i> (L.) Kuntze	A	N	Compositae	Mz, Tz, Ds	An
<i>Cheilanthes acrostica</i> (Balb.) Tod.	Hem	N	Pteridaceae	Mz, Tz, Ds	Fern
<i>Cheilanthes pteridioides</i> (Reichard) C. Chr.	Hem	N	Pteridaceae	Mz, Tz, Ds	Fern
<i>Cheilanthes vellea</i> (Aiton) Domin	Hem	N	Pteridaceae	Mz, Tz, Ds	Fern
<i>Chenopodium album</i> L.	A	N	Amaranthaceae	Md, Tz, Ds, Sd	Wd
<i>Chenopodium ambrosioides</i> L.	A	N	Amaranthaceae	Mz, Tz, Ds	Wd
<i>Chenopodium murale</i> L.	A	N	Amaranthaceae	Md, Tz, Ds, Sd	Wd
<i>Chenopodium vulvaria</i> L.	A	N	Amaranthaceae	Mz, Tz, Ds	Wd
<i>Chiliadenus iphionoides</i> (Boiss. & Blanche) Brullo.	Ch	N	Compositae	Mz, Tz, Ds	An
<i>Chlamyphora tridentata</i> Delile Ehrenb. ex Less.	A	N	Compositae	Mz, Tz	An
<i>Chloris gayana</i> Kunth	Ch, G, Hem	N	Poaceae	Mz, Tz	Wd
<i>Chloris virgata</i> Sw.	A	N	Poaceae	M, T, ED	Wd
<i>Cistanche salsa</i> (C.A.Mey.)Beck.	P	N	Orobanchaceae	ED	An
<i>Cistanche tubulosa</i> (Schenk) Wight	P	N	Orobanchaceae	D, ED	An
<i>Cistus creticus</i> L.	Ch	N	Cistaceae	Md, Ds, Xd	An
<i>Cistus salviifolius</i> L.	Ch	N	Cistaceae	Md, Ds, Sd	An
<i>Citrullus colocynthis</i> (L.) Schrader	Hem	N	Cucurbitaceae	Tz, Sd	An
<i>Clypeola aspera</i> (Grauer) Turill.	A	N	Brassicaceae	Tz, Sd	An
<i>Clypeola jonthlasi</i> L.	A	N	Brassicaceae	Mz, Tz, Ds	An
<i>Cocculus pendulus</i> (J.R.Forst. & G.Forst.) Diels	Ch, V	N	Menispermaceae	Sd	An
<i>Convolvulus althaeoides</i> L.	G, V	N	Convolvulaceae	Mz, Tz, Ds	An
<i>Convolvulus arvensis</i> L.	G, V	N	Convolvulaceae	Mz, Tz, Ds	An
<i>Convolvulus auricomus</i> Bhandari	Ch, V	N	Convolvulaceae	Sd	An
<i>Convolvulus betonicifolius</i> Miller	G, V	N	Convolvulaceae	Md, Tz	An
<i>Convolvulus dorycnium</i> L.	Hem	N	Convolvulaceae	Md, Tz	An
<i>Convolvulus humilis</i> Jacq.	A	N	Convolvulaceae	Md	An
<i>Convolvulus lanatus</i> Vahl.	Ch	N	Convolvulaceae	Tz, Ds, Sd	An
<i>Convolvulus oleifolius</i> Desr.	Ch	N	Convolvulaceae	Tz, Ds	An
<i>Convolvulus palaestinus</i> Boiss.	G, V	E	Convolvulaceae	Md, Tz	An
<i>Convolvulus pentapetaloides</i> L.	A, V	N	Convolvulaceae	Md, Tz	An
<i>Convolvulus pilosellifolius</i> Desr.	G, V	N	Convolvulaceae	Sd	An
<i>Convolvulus scammonia</i> L.	G, V	N	Convolvulaceae	Md	An
<i>Convolvulus siculus</i> L.	A, V	N	Convolvulaceae	Mz, Tz, Ds	An
<i>Convolvulus stachydifolius</i> Choisy	G, V	N	Convolvulaceae	Tz	An
<i>Corchorus olitorius</i> L.	A	N	Tiliaceae	Md, Tz	An
<i>Corchorus trilocularis</i> L.	A	N	Tiliaceae	Md, Tz	An
<i>Cordia sinensis</i> Lam.	Tr	N	Boraginaceae	Sd	An
<i>Crepis aculeata</i> (DC.) Boiss.	A	E	Compositae	Mz, Tz	An
<i>Crepis aspera</i> L. var.dillacerata Bormm.	A	N	Compositae	Mz, Tz, Ds	An
<i>Crepis hierosolymitana</i> Boiss.	H	E	Compositae	Md	An
<i>Crepis micrantha</i> Czerep.	A	N	Compositae	Mz, Tz	An
<i>Crepis palaestina</i> (Boiss.) Bormm.	A	E	Compositae	Mz, Tz	An
<i>Crepis reuteriana</i> Boiss	Hem	N	Compositae	Md	An
<i>Crepis sancta</i> (L.) Bormm.	A	N	Compositae	Md, Tz, Ds, Sd	An
<i>Crepis senecioides</i> Delile	A	N	Compositae	Ds, Sd	An
<i>Crepis syriaca</i> (Bormm.) Bab. & Navashin	A	N	Compositae	Md	An
<i>Cressa cretica</i> L.	Hem	N	Convolvulaceae	Md, Tz, Ds, Sd	An
<i>Crucianella aegyptiaca</i> L.	A	N	Rubiaceae	Mz, Tz, Ds	An
<i>Cutandia memphitica</i> (Spreng.) Benth.	A	N	Poaceae	Md, Tz, Ds, Sd	Wd
<i>Cynodon dactylon</i> (L.) Pers.	C, G	N	Poaceae	Md, Tz, Ds, Sd	Wd
<i>Cynoglossum creticum</i> Miller	Hem	N	Boraginaceae	Md	An
<i>Cynomorium coccineum</i> L.	Hem, P	N	Cynomoriaceae	Ds, Sd	An
<i>Cynosurus coloratus</i> Lehm. Ex. Steud. (<i>Cynosurus callitrichus</i> Barby -Boiss & Barby)	A	N	Poaceae	Md, Tz	Wd
<i>Cynosurus echinatus</i> L.	A	N	Poaceae	Md, Tz	Wd



<i>Cynosurus elegans</i> Desf.	A	N	Poaceae	Md	Wd
<i>Cyperus alopecuroides</i> Rottb.	Hem	N	Cyperaceae	Md	Wd
<i>Cyperus fuscus</i> L.	A	N	Cyperaceae	Md, Tz	Wd
<i>Cyperus glaber</i> L.	A	N	Cyperaceae	Md, Tz	Wd
<i>Cyperus jeminicus</i> Rottb.	Hem	N	Cyperaceae	Sd	Wd
<i>Cyperus laevigatus</i> L.	Hem	N	Cyperaceae	Md, Tz, Ds, Sd	Wd
<i>Cyperus distachyos</i> All.	Hem	N	Cyperaceae	Md, Ds	Wd
<i>Cyperus longus</i> L.	Hem	N	Cyperaceae	Md, Tz	Wd
<i>Cyperus nitidus</i> (Lam.) J.Raynal	Hem	N	Cyperaceae	Md	Wd
<i>Datura ferox</i> L.	A	N	Solanaceae	Md, Tz	An
<i>Datura innoxia</i> Miller	A	N	Solanaceae	Md, Tz	An
<i>Datura stramonium</i> L.	A	N	Solanaceae	Md, Tz	An
<i>Daucus broteri</i> Ten.	A	N	Apiaceae	Md	An
<i>Daucus carota</i> L.	Hem, A	N	Apiaceae	Md, Tz	An
<i>Daucus durieua</i> Lange	A	N	Apiaceae	Md, Tz	An
<i>Daucus guttatus</i> Sm.	A	N	Apiaceae	Md, Tz	An
<i>Daucus littoralis</i> Sm.	A	N	Apiaceae	Md, Tz	An
<i>Delphinium ithaburense</i> Boiss.	G	N	Ranunculaceae	Mz, Tz, Ds	An
<i>Delphinium peregrinum</i> L.	A	N	Ranunculaceae	Mz, Tz, Ds	An
<i>Desmazeria philistaea</i> (Boiss.) H. Scholz	A	E	Poaceae	Mz, Tz	Wd
<i>Desmostachya bipinnata</i> (L.) Stapf.	Hem	N	Poaceae	Md, Ds, Sd	Wd
<i>Deverra tortuosa</i> (Desf.) DC.	Ch	N	Apiaceae	Tz, Ds, Sd	An
<i>Deverra triradiata</i> Hochst. Ex. Boiss.	Ch	N	Apiaceae	Ds, Sd	An
<i>Dipcadi erythraeum</i> Webb. & Berthel.	G	N	Aspleniaceae	Ds, Sd	An
<i>Diplotaxis acris</i> (Forssk.) Boiss.	A	N	Brassicaceae	Sd	An
<i>Diplotaxis erucoides</i> (L.) DC.	A	N	Brassicaceae	Md, Tz, Ds, Sd	An
<i>Diplotaxis harra</i> (Forssk.) Boiss.	A, Ch, Hem	N	Brassicaceae	Ds, Sd	An
<i>Diplotaxis tenuifolia</i> (L.) DC.	Hem	N	Brassicaceae	Sd	An
<i>Diplotaxis viminea</i> (L.) DC.	A	N	Brassicaceae	Md, Tz	An
<i>Dittrichia viscosa</i> (L.) W. Greuter	Ch	N	Compositae	Mz, Tz, Ds	An
<i>Doellia bovei</i> (DC.) Anderb.	Ch	N	Compositae	Md, Ds, Sd	An
<i>Drimia maritima</i> (L.) Stearn	G	N	Asparagaceae	Md, Tz, Ds, Sd	An
<i>Drimia undata</i> Stearn	G	N	Asparagaceae	Ds, Xd	An
<i>Ecballium elaterium</i> (L.) A. Richard	Hem	N	Cucurbitaceae	Md, Tz	An
<i>Echinaria capitata</i> (L.) Desf.	A	N	Poaceae	Md, Tz	Wd
<i>Echinochloa colonum</i> (L.) Link.	A	N	Poaceae	Mz, Tz, Ds	Wd
<i>Echinops acantholepis</i> Jaub. & Spach	A	N	Compositae	Ds	An
<i>Echinops philistaeus</i> Feinbrun & Zohary	Ch	E	Compositae	Md, Tz	An
<i>Echinops polyceras</i> Boiss.	H	N	Compositae	Ds, SD	An
<i>Echinops pungens</i> Trautv.	Ch, Hem	N	Compositae	Md, Tz	An
<i>Echium angustifolium</i> Miller	Ch	N	Boraginaceae	Md, Tz	An
<i>Echium glomeratum</i> Poir.	Hem	E	Boraginaceae	Md	An
<i>Echium judaeum</i> Lacaita	A	E	Boraginaceae	Md, Tz	An
<i>Echium rauwolfii</i> Delile	A	N	Boraginaceae	Ds, Sd	An
<i>Enarthrocarpus strangulatus</i> Boiss.	A	N	Brassicaceae	Ds, Sd	An
<i>Enneapogon desvauxii</i> P. Beauv.	Hem	N	Poaceae	Sd	An
<i>Enneapogon persicus</i> Boiss.	Hem	N	Poaceae	Sd	Wd
<i>Ephedra aphylla</i> Forskal	V, PhS	N	Ephedraceae	Tz, Ds, Sd	An
<i>Ephedra foeminea</i> Forssk.	V, PhS	N	Ephedraceae	Mz, Tz, Ds	An
<i>Epilobium hirsutum</i> L.	Hem	N	Onagraceae	Md	An
<i>Epipactis veratrifolia</i> Boiss. & Hohen	G	N	Orchidaceae	Md, Sd	An
<i>Eragrostis minor</i> Host.	A	N	Poaceae	Md, Tz, Ds, Sd	Wd
<i>Eremobium aegyptiacum</i> (Spreng.) Asch. ex Boiss.	Hem	N	Brassicaceae	Ds, Sd	An
<i>Erigeron bonariensis</i> L.	A	N	Compositae	Md, Tz, Ds	An
<i>Erigeron canadensis</i> L.	A	N	Compositae	Mz, Tz, Ds	An
<i>Erigeron sumatrensis</i> Retz.	A	N	Compositae	Mz, Tz, Ds	An
<i>Erodium crassifolium</i> L'Hér. Ex. Aiton	H	N	Geraniaceae	Ds, Sd	An
<i>Erodium glaucophyllum</i> (L.) L'Hér.	Hem	N	Geraniaceae	Ds, Sd	An
<i>Erodium gruinum</i> (L.) L'Her.	A	N	Geraniaceae	Mz, Tz	An
<i>Erodium laciniatum</i> (Cav.) Willd.	A	N	Geraniaceae	Md, Tz, Ds, Sd	An
<i>Erodium malacoides</i> (L.) L'Her.	A	N	Geraniaceae	Md, Tz	An
<i>Erodium moschatum</i> (L.) L'Her.	A	N	Geraniaceae	Md, Tz	An
<i>Eryngium creticum</i> Lam.	H	N	Apiaceae	Md, Tz	An
<i>Eryngium falcatum</i> F. Delaroche	Hem	N	Apiaceae	Md	An

Classified Plant Al-Dhahiriya in the South of Palestine

<i>Eryngium glomeratum</i> Lam.	Hem	N	Apiaceae	Mz, Tz, Ds	An
<i>Eryngium maritimum</i> L.	Hem	N	Apiaceae	Md	An
<i>Erysimum crassipes</i> Fisch. & C.A.Mey.	Hem	N	Brassicaceae	Md, Tz	An
<i>Erysimum repandum</i> L.	A	N	Brassicaceae	Md, Tz	An
<i>Euphorbia aleppica</i> L.	A	N	Euphorbiaceae	Md, Tz	An
<i>Euphorbia arguta</i> Banks et Solander	A	N	Euphorbiaceae	Md	An
<i>Euphorbia aulacosperma</i> Boiss.	A	N	Euphorbiaceae	Md, Tz	An
<i>Euphorbia berythea</i> Boiss. & Blanche	A	N	Euphorbiaceae	Md	An
<i>Euphorbia chamaepeplus</i> Boiss. et Gaill.	A	N	Euphorbiaceae	Tz, Ds, Sd	An
<i>Euphorbia chamaesyce</i> L.	A	N	Euphorbiaceae	Mz, Tz, Ds	An
<i>Euphorbia exigua</i> L.	A	N	Euphorbiaceae	Md	An
<i>Euphorbia falcata</i> var. <i>galilaea</i> (Boiss.) Boiss	A	E	Euphorbiaceae	Md, Tz	An
<i>Euphorbia forsskalii</i> J.Gay	A	N	Euphorbiaceae	Sd	An
<i>Euphorbia granulata</i> Forskal	A	N	Euphorbiaceae	Sd	An
<i>Euphorbia helioscopia</i> L.	A	N	Euphorbiaceae	Md, Tz	An
<i>Euphorbia heterophylla</i> L.	A	N	Euphorbiaceae	Md	An
<i>Euphorbia hierosolymitana</i> Boiss.	Ch	E	Euphorbiaceae	Mz, Tz, Ds	An
<i>Euphorbia hierosolymitana</i> Boiss. Var. <i>romanensis</i> (Baum.) Zohary	Ch	E	Euphorbiaceae	Ds	An
<i>Euphorbia peplus</i> L.	A	N	Euphorbiaceae	Md, Tz	An
<i>Euphorbia petiolata</i> Banks et Sol.	A	N	Euphorbiaceae	Md, Tz	An
<i>Fagonia arabica</i> L.	Ch	N	Zygophyllaceae	Ds, Sd	An
<i>Fagonia bruguieri</i> DC.	Ch	N	Zygophyllaceae	Sd	An
<i>Fagonia mollis</i> Delile	Ch	N	Zygophyllaceae	Ds, Sd	An
<i>Fagonia orientalis</i> C. Presl.	Ch	N	Zygophyllaceae	Sd	An
<i>Faidherbia albida</i> (Delile) A. Chev.	Tr	N	Leguminosae	Mz, Tz, Ds	An
<i>Farsetia aegyptia</i> Turra	Ch	N	Brassicaceae	Ds, Sd	An
<i>Ferula biverticillata</i> J. Thieb.	Hem	N	Apiaceae	Tz	An
<i>Ferula communis</i> L.	Hem	N	Apiaceae	Md, Tz	An
<i>Ferula orientalis</i> L.	Hem	E	Apiaceae	Tz	An
<i>Ferula tingitana</i> L.	Hem	N	Apiaceae	Md	An
<i>Ferulago syriaca</i> Boiss.	Hem	N	Apiaceae	Md	An
<i>Ficus carica</i> L.	Tr	N	Moraceae	Mz, Tz, Ds	An
<i>Filago inexpectata</i> Wagenitz	A	N	Compositae	Md, Tz	Wd
<i>Filago palaestina</i> (Boiss.) Chrtk & Holub.	A	E	Compositae	Md, Tz	Wd
<i>Filago pyramidata</i> L.	A	N	Compositae	Mz, Tz, Ds	Wd
<i>Fimbristylis bisumbellata</i> (Forssk.) Bubani.	HE	N	Compositae	Md	Wd
<i>Fimbristylis ferruginea</i> (L.) Vahl.	HE	N	Compositae	Mz, Tz, Ds	Wd
<i>Foeniculum vulgare</i> Miller	H	N	Apiaceae	Md, Tz	An
<i>Forsskaolea tenacissima</i> L.	C, H	N	Urticaceae	Ds, Sd	Wd
<i>Frankenia hirsuta</i> L.	Ch	N	Frankeniaceae	Md, Tz, Ds, Sd	An
<i>Frankenia pulverulenta</i> L.	A	N	Frankeniaceae	Sd	An
<i>Gagea dayana</i> Chodat & Beauverd	G	N	Liliaceae	Md, Ds, Sd	An
<i>Gagea fibrosa</i> (Desf.) Schult. & Schult. f.	G	N	Liliaceae	Tz, Ds	An
<i>Gagea reticulata</i> (Pall.) Schult. & Schult.f.	G	N	Liliaceae	Ds, Sd	An
<i>Galium hierochuntinum</i> Borm.	A	E	Rubiaceae	Tz, Ds	An
<i>Galium setaceum</i> Lam.	A	N	Rubiaceae	Md, Tz, Ds, Sd	An
<i>Galium spurium</i> L.	A	N	Rubiaceae	Md, Tz, Ds	An
<i>Glaucium arabicum</i> Fresen.	Hem	N	Papaveraceae	Ds	An
<i>Glaucium corniculatum</i> (L.) J. H. Rudolph	Hem	N	Papaveraceae	Tz, Ds	An
<i>Gymnarrhena micrantha</i> Desf.	A	N	Compositae	Ds, Sd	An
<i>Gymnocarpus decander</i> Forssk.	Ch	N	Caryophyllaceae	Ds, Sd	An
<i>Gymnocarpus sclerocephalus</i> (Decne.) Dahlgren & Thulin	A	N	Caryophyllaceae	Ds, Sd	An
<i>Gypsophila capillaris</i> (Forssk.) C.Chr.	Ch	N	Caryophyllaceae	Tz, Ds, Sd	An
<i>Helianthemum aegyptiacum</i> (L.) Miller	A	N	Cistaceae	Md, Tz, Ds	An
<i>Herniaria hemistemon</i> J. Gay	Hem	N	Caryophyllaceae	Ds, Sd	Wd
<i>Herniaria hirsuta</i> L.	A	N	Caryophyllaceae	Tz, Ds, Sd	Wd
<i>Hippocrepis areolata</i> Desv.	A	N	Leguminosae	Tz, Ds, Sd	An
<i>Hippocrepis multisiliquosa</i> L.	A	N	Leguminosae	Md, Tz, Ds	An
<i>Hippocrepis unisiliquosa</i> L.	A	N	Leguminosae	Md, Tz, Ds, Sd	An
<i>Hirschfeldia incana</i> (L.) Lagr. Foss.	A	N	Brassicaceae	Md, Tz	An
<i>Sinapis incana</i> L.	A	N	Brassicaceae	Md, Tz, Ds	An
<i>Holcus annuus</i> Salzm. Ex. C. A. Mey.	A	N	Poaceae	Md	Wd
<i>Holosteum umbellatum</i> L.	A	N	Caryophyllaceae	Tz, Ds	An
<i>Holosteum umbellatum</i> subsp. <i>glutinatum</i> (M.Bieb.) Nyman	A	N	Caryophyllaceae	Tz, Ds	An
<i>Hordeum bulbosum</i> L.	Hem	N	Poaceae	Md, Tz	Wd

<i>Hordeum marinum</i> Huds.	A	N	Poaceae	Md, Tz	Wd
<i>Hordeum geniculatum</i> All.	A	N	Poaceae	Md, Tz	Wd
<i>Hordeum glaucum</i> Stendel	A	N	Poaceae	Mz, Tz, Ds	Wd
<i>Hordeum spontaneum</i> C. Koch	A	N	Poaceae	Md, Tz, Ds, Sd	Wd
<i>Hormuzakia aggregata</i> (Lehm.) Gusuleac	A	N	Boraginaceae	Md, Tz, Ds, Xd	An
<i>Hornungia procumbens</i> (L.) Hayek	A	N	Brassicaceae	Md, Tz	An
<i>Hueblia calycina</i> (Banks & Sol.) Speta	A	N	Plantaginaceae	Md	An
<i>Hyacinthella nervosa</i> (Bertol.) Chouard	G	N	Asparagaceae	Tz, Ds	An
<i>Hyoscyamus aureus</i> L.	Ch	N	Solanaceae	Md, Tz, Ds	An
<i>Hyoscyamus desertorum</i> (Aschers. ex Boiss.) Taeckh.	A	N	Solanaceae	Ds, Sd	An
<i>Iphiona maris-mortui</i> Feinbrun	Ch	E	Compositae	Ds	An
<i>Ipomoea cairica</i> (L.) Sweet.	Hem, V	N	Convolvulaceae	Md, Tz	An
<i>Ipomoea imperati</i> (Vahl.) Griseb.	Hem	N	Convolvulaceae	Md, Tz	An
<i>Juncus acutus</i> L.	Hem	N	Juncaceae	Md, Tz	Wd
<i>Juncus bufonius</i> L.	A	N	Juncaceae	Md, Tz, Ds	Wd
<i>Juncus rigidus</i> Desf.	Hem	N	Juncaceae	Ds, Xd	Wd
<i>Juniperus oxycedrus</i> L.	Tr	N	Cupressaceae	Md	Wd
<i>Kickxia acerbiana</i> (Boiss.) Täckh. & Boulos	Hem	N	Plantaginaceae	Ds, Sd	An
<i>Kickxia floribunda</i> (Boiss.) Täckh. & Boulos	Ch	N	Plantaginaceae	Ds, Sd	An
<i>Kickxia aegyptiaca</i> (L.) Nabelek	Ch	N	Plantaginaceae	Md, Tz	An
<i>Kickxia judaica</i> danin	Ch	E	Plantaginaceae	Tz, Ds	An
<i>Lactuca hispida</i> DC.	He	N	Compositae	Md	An
<i>Lactuca orientalis</i> Boiss.	Ch	N	Compositae	Tz, Ds	An
<i>Lactuca saligna</i> L.	A	N	Compositae	Md, Tz	An
<i>Lactuca serriola</i> L.	A	N	Compositae	Md, Tz, Ds	An
<i>Lactuca tuberosa</i> Jacq.	A	N	Compositae	Md	An
<i>Lactuca undulata</i> Ledeb.	A	N	Compositae	Ds	An
<i>Lagoecia cuminoides</i> L.	A	N	Apiaceae	Md, Tz, Ds	An
<i>Lathyrus annuus</i> L.	A	N	Leguminosae	Md	An
<i>Lathyrus aphaca</i> L.	A, V	N	Leguminosae	Md, Tz	An
<i>Lathyrus blepharicarpus</i> Boiss.	A, V	N	Leguminosae	Md, Tz	An
<i>Lathyrus ciliolatus</i> Sam. Ex. Rech. f.	A, V	N	Leguminosae	Md, Tz	An
<i>Lathyrus gorgoni</i> Parl.	A, V	N	Leguminosae	Md	An
<i>Lathyrus hierosolymitanus</i> Boiss.	A, V	N	Leguminosae	Md	An
<i>Lathyrus inconspicuus</i> L.	A	N	Leguminosae	Md, Tz	An
<i>Lathyrus marmoratus</i> Boiss. et Bl.	A, V	N	Leguminosae	Md, Tz	An
<i>Lathyrus ochrus</i> (L.) DC.	A, V	N	Leguminosae	Md	An
<i>Lathyrus pseudocicera</i> Pamp.	A, V	N	Leguminosae	Tz, Ds	An
<i>Lathyrus sphaericus</i> Retz.	A, V	N	Leguminosae	Md	An
<i>Launaea angustifolia</i> (Desf.) Kuntze	A	N	Compositae	Ds, Sd	An
<i>Launaea fragilis</i> (Asso.) Pau.	Hem	N	Compositae	Md, Tz	An
<i>Launaea mucronata</i> (Forssk.) Muschl	A	N	Compositae	Ds, Sd	An
<i>Launaea nudicaulis</i> (L.) Hook.f.	Hem	N	Compositae	Ds, Xd	An
<i>Leontodon tuberosus</i> L.	Hem	N	Compositae	Md, Tz	An
<i>Leontice leontopetalum</i> L.	G	N	Berberidaceae	Tz, Ds	An
<i>Leontodon laciniatus</i> (Bertol.) Widder	A	N	Compositae	Ds, Sd	An
<i>Linaria tenuis</i> Spreng.	A	N	Plumbaginaceae	Tz, Ds	An
<i>Lobularia arabica</i> (Boiss.) Muschl.	A	N	Brassicaceae	Ds, Sd	An
<i>Lobularia libyca</i> (Viv.) Webb. & Berthel.	A	N	Brassicaceae	Ds, Sd	An
<i>Lotus angustissimus</i> L.	A	N	Leguminosae	Md	An
<i>Lotus conimbricensis</i> Brot.	A	N	Leguminosae	Md	An
<i>Lotus conjugatus</i> subsp. <i>requienii</i> (Sanguin.) Greuter	A	N	Leguminosae	Md	An
<i>Lotus creticus</i> L.	Ch	N	Leguminosae	Md	An
<i>Lotus edulis</i> L.	A	N	Leguminosae	Md	An
<i>Lotus halophilus</i> Boiss. & Sprune	A	N	Leguminosae	Md, Tz, Ds, Sd	An
<i>Lotus hispidus</i> DC.	A	N	Leguminosae	Md	An
<i>Lotus longesiliquosus</i> R. Roem.	H	N	Leguminosae	Md	An
<i>Lotus ornithopodioides</i> L.	A	N	Leguminosae	Md	An
<i>Lotus palaestinus</i> (Boiss. & Blanche) Blatt.	A	E	Leguminosae	Md	An
<i>Lotus palustris</i> Willd.	Hem	N	Leguminosae	Md	An
<i>Lotus peregrinus</i> L.	Hem	N	Leguminosae	Md, Tz	An
<i>Lotus tenuis</i> Waldst. & Kit.	A	N	Leguminosae	Md, Tz, Ds	An
<i>Lotus tetragonolobus</i> L.	A	N	Leguminosae	Md	An
<i>Lycium depressum</i> Stocks	Phs	N	Solanaceae	Sd	An
<i>Lycium schweinfurthii</i> Dammer	Phs	E	Solanaceae	Md	An
<i>Lycium shawii</i> Roem. & Schult.	Phs	N	Solanaceae	Ds, Sd	An

Classified Plant Al-Dhahiriya in the South of Palestine

Malcolmia africana (L.) R.Br.	A	N	Brassicaceae	Ds, Sd	An
Malva aegyptia L.	A	N	Malvaceae	Ds, Sd	An
Malva multiflora (Cav.) Soldano, Banfi. & Galasso.	A	N	Malvaceae	Md, Tz	An
Malva nicaeensis All.	A	N	Malvaceae	Md, Tz, Ds	An
Malva oxyloba Boiss.	A	N	Malvaceae	Md	An
Malva parviflora L.	A	N	Malvaceae	Tz, Ds, Sd	An
Malva sylvestris L.	Hem	N	Malvaceae	Md, Tz, Ds	An
Malvella sherardiana (L.) Jaub. & Spach	Hem	N	Malvaceae	Md, Tz	An
Marrubium alysson L.	Ch	N	Lamiaceae	Sd	An
Marrubium vulgare L.	Ch	N	Lamiaceae	Md, Tz, Ds	An
Matricaria aurea (L.) Sch. Bip.	A	N	Compositae	Md, Tz, Ds	An
Medicago astroites (Fisch. & Medicago astroites	A	N	Leguminosae	Ds	An
Medicago blanchiana Boiss.	A	N	Leguminosae	Md	An
Medicago constricta Durieu.	A	N	Leguminosae	Md	An
Medicago coronata (L.) Bartal.	A	N	Leguminosae	Md, Tz	An
Medicago doliaata Carmign.	A	N	Leguminosae	Md	An
Medicago granadensis Willd.	A	N	Leguminosae	Md	An
Medicago hypogaea E. Small.	A	N	Leguminosae	Tz	An
Medicago intertexta subsp. ciliaris (L.) Ponert.	A	N	Leguminosae	Md	An
Medicago laciniata (L.) Miller	A	N	Leguminosae	Tz, Ds, Sd	An
Medicago littoralis Loisel.	A	N	Leguminosae	Md, Tz	An
Medicago monspeliaca (L.) Trautv.	A	N	Leguminosae	Md, Tz	An
Medicago radiata L.	A	N	Leguminosae	Tz, Ds	An
Medicago sativa L.	Hem	N	Leguminosae	Md, Tz	An
Melia azeradach L.	Tr	N	Meliaceae	Md	An
Melica persica Kunth	Hem	N	Leguminosae	Md, Sd	An
Nerium oleander L.	Phs	N	Apocynaceae	Md, Tz	An
Neurada procumbens L.	A	N	Neuradaceae	Ds, Sd	An
Nicotiana glauca Graham	Tr	N	Solanaceae	Ds, Sd	An
Nigella arvensis L.	A	N	Ranunculaceae	Mz, Tz, Ds	An
Noaea mucronata (Forssk.) Asch. & Schweinf.	Ch	N	Amaranthaceae	Tz, Ds, Sd	Wd
Nonea philistaea Boiss.	A	E	Brassicaceae	Md	An
Nonea ventricosa (SM.) Griseb.	A	N	Brassicaceae	Md, Tz	An
Notobasis syriaca (L.) Cass.	A	N	Compositae	Md, Tz	An
Notoceras bicorne (Aiton) Amo.	A	N	Brassicaceae	Ds, Sd	An
Olea europaea L.	Tr	N	Oleaceae	Md	Wd
Ononis biflora Desf.	A	N	Leguminosae	Md, Tz	An
Ononis mollis Savi.	A	N	Leguminosae	Md, Tz	An
Ononis natrix L.	Ch	N	Leguminosae	Mz, Tz, Ds	An
Ononis serrata Forssk.	A	N	Leguminosae	Md, Tz, Ds, Sd	An
Ononis spinosa L.	Hem	N	Leguminosae	Md, Tz, Ds, Sd	An
Onopordum alexandrinum Boiss.	Hem	N	Leguminosae	Tz, Ds	An
Onopordum telavivense Eig., (Onopordum carduiforme Boiss.)	Hem	E	Compositae	Md, Tz	An
Onopordum cynarocephalum Boiss. & Blanche	Hem	E	Compositae	Md	An
Onopordum jordanicola Eig.	Hem	E	Compositae	Md, Tz	An
Onopordum macrocephalum Eig.	Hem	E	Compositae	Tz, Ds	An
Onopordum palaestinum Eig.	Hem	E	Compositae	Tz	An
Onosma echinata Desf. (Onosma aleppica Boiss.)	Hem	N	Boraginaceae	Tz	An
Onosma gigantea Lam.	Hem	N	Boraginaceae	Md, Tz	An
Onosma orientalis (L.) L.	Ch	N	Boraginaceae	Mz, Tz, Ds	An
Orobanche aegyptiaca Pres.	P	N	Leguminosae	Md	An
Orobanche cernua Loefl.	P	N	Orchidaceae	Tz, Ds, Sd	An
Orobanche muteli F. W. Schultz	P	N	Orchidaceae	Mz, Tz, Ds	An
Orobanche palaestina Reut.	P	E	Orchidaceae	Md	An
Orobanche pubescens d'Urv.	P	N	Orchidaceae	Md	An
Paliurus spina-christi Miller	Tr	N	Rhamnaceae	Md	An
Papaver humile Fedde	A	N	Papaveraceae	Mz, Tz, Ds	An
Papaver hybridum L.	A	N	Papaveraceae	Md, Tz, Ds, Sd	An
Papaver polytrichum Boiss. & Kotschy	A	N	Papaveraceae	Tz, Ds, Sd	An
Papaver somniferum L.	A	N	Papaveraceae	Tz, Ds, Sd	An
Papaver umbonatum Boiss.	A	N	Papaveraceae	Md, Tz	An
Paronychia Arabica (L.) DC.	Hem, A	N	Caryophyllaceae	Ds, Sd	An
Paronychia argentea Lam.	Hem	N	Caryophyllaceae	Md, Tz	An
Paronychia capitata (L.) Lam.	Hem	N	Caryophyllaceae	Md, Ds	An
Paronychia palaestina Eig.	Hem	E	Caryophyllaceae	Md	An
Paronychia sinaica Fresen.	Hem	N	Caryophyllaceae	Md, Tz, Ds, Sd	Wd



<i>Peganum harmala</i> L.	Hem	N	Nitrariaceae	T, D, ED	An
<i>Phagnalon barbeyanum</i> Asch. & Schweinf.	Ch	N	Compositae	D, ED	An
<i>Phagnalon rupestre</i> (L.) DC.	Ch	N	Compositae	M, T, D	An
<i>Phlomis brachyodon</i> (Boiss.) Zohary ex Rech. f.	Ch	N	Lamiaceae	Md, Tz	An
<i>Phlomis chrysophylla</i> Boiss.	Ch	N	Lamiaceae	M	An
<i>Phlomis herba-venti</i> subsp. <i>pungens</i> (Willd.) Maire ex. DeFilipps	Hem	N	Lamiaceae	Md	An
<i>Phlomis platystegia</i> Post.	Ch	E	Lamiaceae	Ds	An
<i>Phlomis viscosa</i> Poiret.	Ch	N	Lamiaceae	Md	An
<i>Phragmites australis</i> (Cav.) Trin. Ex. Steud.	G, Hem	N	Poaceae	Md, Tz, Ds, Sd	Wd
<i>Picris amalecitana</i> (Boiss.) Eig.	A	E	Compositae	Md, Tz	An
<i>Picris asplenioides</i> L.	A	N	Compositae	Ds, Sd	An
<i>Picris galilaea</i> (Boiss.) Eig.	A	E	Compositae	Md	An
<i>Picris damascena</i> Boiss. & Gaill. Ex Boiss. & Gaill.	A	N	Compositae	Ds, Xd	An
<i>Pimpinella cretica</i> Poiret.	A	N	Apiaceae	Md, Tz, Ds, Sd	An
<i>Pimpinella eriocarpa</i> Banks & Sol.	A	N	Apiaceae	Tz, Ds	An
<i>Pinus brutia</i> Tenore	Tr	N	Pinaceae	Md	Wd
<i>Pinus halepensis</i> Miller	Tr	N	Pinaceae	Md	Wd
<i>Pinus pinea</i> L.	Tr	N	Pinaceae	Md	Wd
<i>Pistacia atlantica</i> Desf.	Tr	N	Anacardiaceae	Md, Tz, Ds, Sd	Wd
<i>Pistacia lentiscus</i> L.	Phs	N	Anacardiaceae	Md	Wd
<i>Pistacia palaestina</i> Boiss.	Phs, Tr	E	Anacardiaceae	Md	Wd
<i>Pistacia saportae</i> Burnat	Tr	N	Anacardiaceae	Md	Wd
<i>Pisum elatius</i> M. Bieb.	A, V	N	Leguminosae	Md	An
<i>Prosopis farcta</i> (Banks et Sol.) Macbride	Ch, Hem, Phs	N	Leguminosae	Md, Tz, Ds, Sd	An
<i>Prospero hanburyi</i> (Baker) Speta	G	N	Asparagaceae	Ds, SD	An
<i>Prunus arabica</i> (Olivier) Meikle.	Phs	N	Rosaceae	Tz	An
<i>Prunus dulcis</i> (Mill.) D. A. Webb.	Tr	N	Rosaceae	Md, Tz	An
<i>Prunus korshinskyi</i> Hand. Mazz. (<i>Amygdalus korshinskyi</i> (Hand-Mazzetti) Bornm.)	Tr	E	Rosaceae	Md, Tz	An
<i>Prunus ursina</i> Kotschy	Tr	N	Rosaceae	Md	An
<i>Prunus ramonensis</i> (Danin) Eisenman	Tr	E	Rosaceae	Md, Tz	An
<i>Quercus coccifera</i> L. (<i>Quercus calliprinos</i> Webb.)	Tr, Phs	N	Fagaceae	Md	Wd
<i>Quercus boissieri</i> Reuter var. <i>latifolia</i> (Boiss.) Zohary	Tr	N	Fagaceae	Md	Wd
<i>Quercus ithaburensis</i> Decne.	Tr	N	Fagaceae	Md	Wd
<i>Ranunculus arvensis</i> L.	A	N	Ranunculaceae	Md, Tz	An
<i>Ranunculus asiaticus</i> L.	G	N	Ranunculaceae	Mz, Tz, Ds	An
<i>Ranunculus chius</i> D C.	A	N	Ranunculaceae	Md	An
<i>Ranunculus marginatus</i> d'Urv	A	N	Ranunculaceae	Md	An
<i>Ranunculus millefolius</i> Banks & Sol.	G	N	Ranunculaceae	Md, Tz	An
<i>Ranunculus muricatus</i> L.	A	N	Ranunculaceae	Md	An
<i>Ranunculus ophioglossifolius</i> Vill.	A	N	Ranunculaceae	Md	An
<i>Ranunculus peltatus</i> Schrank	HE	N	Ranunculaceae	Md	An
<i>Ranunculus scandicinus</i> (Boiss.) P. H. Davis	A	N	Ranunculaceae	Md	An
<i>Suaeda palaestina</i> Eig. & Zohary	Ch	E	Tamaricaceae	Ds, Sd	An
<i>Reaumuria negevensis</i> Zohary & Danin	Ch	E	Tamaricaceae	Ds, ED	An
<i>Retama raetam</i> (Forssk.) Webb.	Phs	N	Leguminosae	Md, Tz, Ds, Sd	An
<i>Rhamnus alaternus</i> L.	Tr	N	Rhamnaceae	Md	An
<i>Rhamnus disperma</i> Ehrenb. Ex. Boiss.	Phs	N	Rhamnaceae	Ds, Sd	An
<i>Rhamnus palaestina</i> Boiss. (<i>Rhamnus lycioides</i> L.)	Phs	E	Rhamnaceae	Mz, Tz, Ds	An
<i>Rhagadiolus stellatus</i> (L.) Gaertn.	A	N	Compositae	Mz, Tz, Ds	An
<i>Rhamnus punctata</i> Boiss.	Phs	N	Rhamnaceae	Md	An
<i>Rubus sanctus</i> Schreb.	Phs	N	Rosaceae	Md, Sd	An
<i>Saccharum ravennae</i> (L.)L.	Hem	N	Poaceae	Md, Tz, Ds, Sd	Wd
<i>Saccharum spontaneum</i> L.	G, Phs	N	Poaceae	Md, Sd	Wd
<i>Salsola cyclophylla</i> Baker	Ch	N	Amaranthaceae	Ds, Sd	Wd
<i>Salsola imbricata</i> Forssk.	Phs	N	Amaranthaceae	Ds, Sd	Wd
<i>Salsola gaetula</i> (Maire) Botsch.	Ch	N	Amaranthaceae	Xd	Wd
<i>Salsola incanescens</i> C. A. Mey.	A	N	Amaranthaceae	Ds, Xd	Wd
<i>Salsola inermis</i> Forssk.	A	N	Amaranthaceae	Ds, Sd	Wd
<i>Salsola jordanicola</i> Eig.	A	N	Amaranthaceae	Ds, Sd	Wd
<i>Salsola tragus</i> L.	A	N	Amaranthaceae	Md, Tz, Ds, Sd	Wd
<i>Salsola schweinfurthii</i> Solms	Ch	N	Amaranthaceae	Ds, Sd	Wd

Classified Plant Al-Dhahiriya in the South of Palestine

<i>Salvia aegyptiaca</i> L.	Ch	N	Lamiaceae	Ds, Sd	An
<i>Salvia bracteata</i> Banks & Sol.	Hem	N	Lamiaceae	Tz	An
<i>Salvia ceratophylla</i> L.	Hem	N	Lamiaceae	Ds	An
<i>Salvia dominica</i> L.	Ch	N	Lamiaceae	Md, Tz	An
<i>Salvia eigii</i> Zohary	Hem	E	Lamiaceae	Md	An
<i>Salvia fruticosa</i> Miller	Ch	N	Lamiaceae	Md	An
<i>Salvia hierosolymitana</i> Boiss.	Hem	E	Lamiaceae	Md	An
<i>Salvia spinosa</i> L.	Hem	N	Lamiaceae	Ds, Sd	An
<i>Sarcopoterium spinosum</i> (L.) Sp.	Ch	N	Rosaceae	Md, Tz	Wd
<i>Satureja thymbra</i> L.	Ch	E	Lamiaceae	Md	An
<i>Satureja thymbrifolia</i> Hedge & Feinbrun	Ch	E	Lamiaceae	Ds	An
<i>Scaligeria napiformis</i> Grande	Hem	N	Lamiaceae	Md	An
<i>Scandix australis</i> L.	A	N	Apiaceae	Md	An
<i>Scrophularia deserti</i> Delile	Hem	N	Scrophulariaceae	Ds, Sd	An
<i>Scrophularia hierochuntina</i> Boiss.	Hem	N	Scrophulariaceae	Md	An
<i>Scrophularia hypericifolia</i> Wydler.	Ch	N	Scrophulariaceae	Tz, Ds	An
<i>Sedum palaestinum</i> Boiss.	A	E	Crassulaceae	Md, Tz	An
<i>Senecio coronopifolius</i> Desf.	A	N	Compositae	Ds, Xd	An
<i>Senecio flavus</i> (Decne.) Schultz. Bip.	A	N	Compositae	Ds, Sd	An
<i>Senecio glaucus</i> L.	A	N	Compositae	Ds, Sd	An
<i>Senecio leucanthemifolius</i> Poir.	A	N	Compositae	OM, Md, Tz	An
<i>Senecio vulgaris</i> L.	A	N	Compositae	Md	An
<i>Silene vivianii</i> Steud.	A	N	Caryophyllaceae	Ds, Sd	An
<i>Silene vulgaris</i> (Moench) Garke	A	N	Caryophyllaceae	Mz, Tz, Ds	An
<i>Silene oxydonta</i> Barb. Boiss. & Barbey	A	N	Caryophyllaceae	Ds, Tz	An
<i>Silybum marianum</i> (L.) Gaertn	A	N	Compositae	Md, Tz	An
<i>Sinapis alba</i> L.	A	N	Brassicaceae	Md, Tz	An
<i>Sinapis arvensis</i> L.	A	N	Brassicaceae	Md, Tz	An
<i>Solanum americanum</i> Miller	Hem	N	Apiaceae	Mz, Tz, Ds	An
<i>Solanum angustifolium</i> Mill	A	N	Apiaceae	Md	An
<i>Solanum elaeagnifolium</i> Cav.	A	N	Solanaceae	Md, Tz	An
<i>Solanum incanum</i> L.	Ch	N	Solanaceae	Sd	An
<i>Solanum luteum</i> Miller	Hem	N	Solanaceae	Mz, Tz, Ds	An
<i>Solanum sinaicum</i> Boiss.	Ch	N	Solanaceae	T, D, ED	An
<i>Solanum villosum</i> Miller	Hem	N	Solanaceae	Mz, Tz, Ds	An
<i>Sonchus asper</i> (L.) Hill.	A	N	Solanaceae	Md	An
<i>Sonchus maritimus</i> L.	Hem	N	Compositae	Mz, Tz, Ds	An
<i>Sonchus microcephalus</i> Mejías	A	N	Compositae	Sd	An
<i>Sonchus oleraceus</i> L.	A	N	Compositae	Md, Tz, Ds, Sd	An
<i>Stachys palaestina</i> L.	Ch	E	Lamiaceae	Md	An
<i>Stachys viticina</i> Boiss.	Hem	N	Lamiaceae	Md	An
<i>Stachys zoharyana</i> Eig.	A	E	Lamiaceae	Md	An
<i>Tamarix Aphylla</i> (L.) Karsten (<i>Tamarix varticula</i> Vahl.)	Tr	N	Tamaricaceae	Sd	An
<i>Tamarix jordanis</i> Boiss.	Tr	E	Tamaricaceae	Md, Tz, Ds, Sd	An
<i>Tamarix palaestina</i> Bertol.	Tr	E	Tamaricaceae	Tz, Ds, Sd	An
<i>Tamarix negevensis</i> Zohary	Tr	E	Tamaricaceae	Ds, Sd	An
<i>Tamarix gennessarensis</i> Zohary	Tr	E	Tamaricaceae	Tz, Ds, Sd	An
<i>Telmissa microcarpa</i> (Sm.) Boiss.	A	N	Crassulaceae	Mz, Tz, Ds	An
<i>Teucrium capitatum</i> L.	Ch	N	Lamiaceae	Mz, Tz, Ds	An
<i>Teucrium creticum</i> L.	Ch	N	Lamiaceae	Md	An
<i>Teucrium divaricatum</i> Sieber ex. Heldr.	Ch	N	Lamiaceae	Md	An
<i>Teucrium lamiifolium</i> d'Urv.	A	E	Lamiaceae	Md	An
<i>Teucrium montbretii</i> Benth.	Hem	N	Lamiaceae	Tz	An
<i>Teucrium parviflorum</i> Schreb.	Hem	N	Lamiaceae	Tz	An
<i>Teucrium procerum</i> Boiss. & Blanche	Hem	N	Lamiaceae	Md	An
<i>Teucrium scordium</i> L.	Hem	N	Lamiaceae	Md	An
<i>Teucrium spinosum</i> L.	A	N	Lamiaceae	Md	An
<i>Teucrium parviflorum</i> Schreb.	Hem	N	Lamiaceae	Tz	An
<i>Thymbra capitata</i> (L.) Cav.	Ch	N	Lamiaceae	Md	An
<i>Tordylium aegyptiacum</i> Lam.	A	N	Apiaceae	Md, Tz	An
<i>Tribulus terrestris</i> L.	A	N	Zygophyllaceae	Md, Tz, Ds, Sd	An
<i>Trichodesma africanum</i> (L.) Sm.	A	N	Boraginaceae	Ds, Sd	An
<i>Trichodesma boissieri</i> Post.	Hem	N	Boraginaceae	Tz, Sd	An
<i>Tricholaena teneriffae</i> (L. f.) Link.	Hem	N	Poaceae	Md, Tz, Ds, Sd	Wd
<i>Trifolium alexandrinum</i> L.	A	E	Leguminosae	Md	An



<i>Trifolium argutum</i> Sol.	A	N	Leguminosae	Md, Tz	An
<i>Trifolium campestre</i> Schreb.	A	N	Leguminosae	Md, Tz	An
<i>Trifolium clypeatum</i> L.	A	N	Leguminosae	Md	An
<i>Trifolium dasyurum</i> C. Presl.	A	N	Leguminosae	Md, Tz	An
<i>Trifolium dichroanthum</i> Boiss.	A	N	Leguminosae	Md, Tz	An
<i>Trifolium echinatum</i> M. Bieb.	A	N	Leguminosae	Md	An
<i>Trifolium eriosphaerum</i> Boiss.	A	E	Leguminosae	Md, Tz	An
<i>Trifolium arvense</i> L.	A	N	Leguminosae	Md	An
<i>Trifolium campestre</i> Schreb.	A	N	Leguminosae	Md, Tz	An
<i>Silene palaestina</i> Boiss.	A	E	Caryophyllaceae	Md, Tz, Ds	An
<i>Trifolium dichroanthum</i> Boiss.	A	N	Leguminosae	Md, Tz	An
<i>Trifolium prophetarum</i> M. Hossain	A	E	Leguminosae	Md, Tz	An
<i>Trifolium purpureum</i> Loisel.	A	N	Leguminosae	Md, Tz	An
<i>Trifolium tomentosum</i> L.	A	N	Leguminosae	Md, Tz, Ds	An
<i>Trigonella arabica</i> Delile	A	N	Leguminosae	Ds, Sd	An
<i>Trigonella arabica</i> Delile	A	N	Leguminosae	Ds, Sd	An
<i>Trigonella schlumbergeri</i> Boiss.	A	N	Leguminosae	Md, Ds	An
<i>Urtica pilulifera</i> L.	A	N	Urticaceae	Md, Tz	Wd
<i>Urtica urens</i> L.	A	N	Urticaceae	M, TZ	Wd
<i>Verbascum agrimoniifolium</i> Huber-Morath	Hem	N	Scrophulariaceae	Md, Tz	An
<i>Verbascum eremobium</i> Murb.	Ch	N	Scrophulariaceae	Ds, Sd	An
<i>Verbascum fruticosum</i> Post.	Ch	N	Scrophulariaceae	TZ, D, ED	An
<i>Verbascum gaillardotii</i> Boiss.	Hem	E	Scrophulariaceae	Md	An
<i>Verbascum galilaeum</i> Boiss.	Hem	E	Scrophulariaceae	Md	An
<i>Verbascum jordanicum</i> Murb.	Hem	E	Scrophulariaceae	TZ, Ds	An
<i>Verbascum levanticum</i> I. K. Ferguson	Hem	N	Scrophulariaceae	Md	An
<i>Verbascum orientale</i> (L.) All.	A	N	Scrophulariaceae	Md, Tz	An
<i>Verbascum sinaiticum</i> Benth.	Hem	E	Scrophulariaceae	Tz, Ds	An
<i>Verbascum sinuatum</i> L.	Hem	N	Scrophulariaceae	Md, Tz	An
<i>Verbascum tiberiadis</i> Boiss.	Hem	N	Scrophulariaceae	Md, Tz	An
<i>Veronica arvensis</i> L.	A	N	Plantaginaceae	Md	An
<i>Veronica cymbalaria</i> Bodard.	A	N	Plantaginaceae	Md, Tz	An
<i>Veronica hederifolia</i> L.	A	N	Plantaginaceae	Md	An
<i>Veronica panormitana</i> Tineo ex. Guss.	A	N	Plantaginaceae	Md, Tz	An
<i>Vicia peregrina</i> L.	A, V	N	Leguminosae	Md, Tz	An
<i>Vicia sativa</i> L.	A, V	N	Leguminosae	Md, Tz	An
<i>Vicia sericocarpa</i> Fenzl.	A, V	N	Leguminosae	Md, Tz	An
<i>Vulpia brevis</i> Boiss. & Kotschy	A	N	Poaceae	Ds, Sd	Wd
<i>Vulpia ciliata</i> Dumort.	A	N	Poaceae	Md, Tz	Wd
<i>Vulpia fasciculata</i> (Forssk.) Samp.	A	N	Poaceae	Md	Wd
<i>Vulpia muralis</i> (Kunth) Nees	A	N	Poaceae	Md	Wd
<i>Vulpia myuros</i> (L.) C. C. Gmel.	A	N	Poaceae	Md, Tz	Wd
<i>Vulpia pectinella</i> (Delile) Boiss.	A	N	Poaceae	Ds, Sd	Wd
<i>Vulpia unilateralis</i> (L.) Stace	A	N	Poaceae	Tz	Wd
<i>Xanthium spinosum</i> L.	A	N	Compositae	Md	Wd
<i>Xanthium strumarium</i> L.	A	N	Compositae	Md, Tz	Wd
<i>Ziziphora capitata</i> L.	A	N	Lamiaceae	M	An
<i>Ziziphora tenuior</i> L.	A	N	Lamiaceae	TZ, D	An
<i>Ziziphus lotus</i> (L.) Lam.	Phs	N	Rhamnaceae	Tz	An
<i>Ziziphus spina-christi</i> (L.) Desf.	Tr	N	Rhamnaceae	Md, Tz, Ds, Sd	An
<i>Cupressus sempervirens</i> L.	Tr	N	Cupressaceae	Md	Wd
<i>Haloxylon negevensis</i> (Iljin & Zohary) L.Boulos	Ch	E	Amaranthaceae	Ds, Sd	Wd
<i>Haloxylon persicum</i> Bunge	Phs	N	Amaranthaceae	Sd	Wd
<i>Haloxylon salicornicum</i> (Moq.) Bunge ex Boiss.	Ch	N	Amaranthaceae	Xd	Wd
<i>Ziziphus lotus</i> (L.) Lam.	Phs	N	Rhamnaceae	Tz	An
<i>Morus alba</i> L.	Phs, Tr	N	Moraceae	M, Tz	Wd
<i>Morus nigra</i> L.	Tr	N	Moraceae	Md, Tz	Wd
<i>Opuntia ficus indica</i> (L.) Miller	Shrub	N	Cactaceae	Md, Tz, Ds, Sd	Wd
<i>Opuntia robusta</i> J.C. Wendl.	Shrub	N	Cactaceae	Md, Tz, Ds, Sd	Wd
<i>Cuscuta planiflora</i> Ten.	A, P, V	N	Convolvulaceae	Md, Tz	An
<i>Cutandia dichotoma</i> (Forssk.) Trab.	A	N	Poaceae	Ds, Sd	Wd
<i>Cutandia maritima</i> (L.) Banth.	A	N	Poaceae	Md	Wd
<i>Rumex cyprus</i> Murb.	A	N	Polygonaceae	Md, Ds, Sd	Wd
<i>Cyclamen persicum</i> Miller	G	N	Primulaceae	Md, Tz	An
<i>Cymbalaria muralis</i> P.Gaertn. B. Mey. & Scherb.	Hem	N	Plantaginaceae	Md	An
<i>Cymbolaena griffithii</i> (A.Gray) Wagenitz	A	N	Compositae	Tz	Wd

Classified Plant Al-Dhahiriya in the South of Palestine

<i>Cymodocea nodosa</i> (Ucria) Asch.	HE	N	Cymodocaceae	Md	Wd
<i>Cynanchum acutum</i> L.	V, Phs	N	Apocynaceae	M, Tz	An
<i>Cynara syriaca</i> Boiss.	Hem	N	Compositae	Md	An
<i>Reseda urnigera</i> Webb.	Hem	N	Resedaceae	Ds, Sd	An
<i>Reseda lutea</i> L.	A	N	Resedaceae	Md, Tz, Ds, Sd	An
<i>Reseda luteola</i> L.	A	N	Resedaceae	Mz, Tz, Ds	An
<i>Rhus coriaria</i> L.	Phs	N	Anacardiaceae	Md	An
<i>Rhus tripartita</i> (Ucria) Grande	Phs	N	Anacardiaceae	Tz, Ds	Wd
<i>Rubus sanctus</i> Schreb.	Phs	N	Rosaceae	M, ED	An
<i>Rumex bucephalophorus</i> L.	A	N	Polygonaceae	Mz, Tz, Ds	Wd
<i>Rumex vesicarius</i> L.	A	N	Polygonaceae	Ds, Sd	Wd
<i>Ruppia cirrhosa</i> (Petagna) Grande	HE	N	Ruppiaceae	Md, Ds, Sd	Wd
<i>Ruppia maritima</i> L.	HE	N	Ruppiaceae	Md, Ds, Sd	Wd
<i>Rostraria pumila</i> (Desf.) Tzvev	A	N	Poaceae	Ds, Sd	Wd
<i>Rostraria smyrnacea</i> (Trin.) H. Scholz.	A	N	Poaceae	Mz, Tz, Ds	Wd
<i>Rosularia lineata</i> (Boiss.) A. Berger	Hem	N	Crassulaceae	Mz, Tz, Ds	An
<i>Salvia judaica</i> Boiss.	Hem	E	Lamiaceae	Md	An

Abbreviations: Life form: Annual (A), Annual vine (A, V), annual, parasite, vine (A, P, V), hemicryptophytes (Hm), hemicryptophytes-Parasite (Hm, P), hemicryptophytes-annual (Hm, A), hemicryptophytes-vine (Hm, V), hemicryptophytes-geophyte (Hm, G), shrubs, semi-shrubs/shrublet or chamaephytes (Cm), chamaephytes-hemicryptophytes (Cm, Hm), Cm, V (chamaephytes-vine), chamaephytes-geophyte (Cm, G), chamaephytes, shrubs-geophytes (Cm,G), chamaephytes-annual (Cm, A), chamaephytes, hemicryptophytes, annual (Cmh, Hm, A), Tree (Tr), phanerophyte (Phs), phanerophyte- tree (Phs, Tr), phanerophyte- shrubs (Phs, Cm), phanerophyte shrubs, vine (Phs, Cm, V), phanerophyte- shrubs-hemicryptophytes (Phs, Cm, Hm), phanerophyte geophyte (Phs, G), geophyte (G), geophyte-vine (G, V), parasite vine (P, V) and helophyte (HE). Status: (Eedimic) (E), native (Na). Climatology: Mediterranean (Mid), Transition zone (Tz), Oro-mediterranean (OM), Desert (D), and Sd & Xd (semi desert & extreme desert). Pollination: Animals (An), Wind (Wi) and Fer (Fern).

III. RESULT AND DISCUSSION

Due to the important geographical location of Al-Dhahiriya in southern Palestine, the Mediterranean, Turanian, Iranian, Sudanese, and Arab desert vegetation regions overlap in a region with different climates and soil types (Ali-Shtayeh et al., 2003; Ali-Shtayeh et al., 2008; Ighbareyeh et al., 2014c, 2016, 2017, 2018, 2019, 2020, 2021), The flora in this region is also considered part of the African flora such as Egypt, Red Sea & Sinai desert; Negev; Syria; Lebanon; Jordan; Jordan Valley; Dead Sea and Mediterranean region.

A. Plant Taxonomic Cover

The collection of vascular plants contains 230 specimens belonging to 70 families, 770 species, and the plant families that contributed the most to their existence in terms of the percentage of their plant species are: Compositae (Asteraceae) (112, 14.54%), Fabaceae (Leguminosae) (109, 14.15%), Poaceae (57, 7.41%), Lamiaceae (40, 5.19%), Amaranthaceae (36, 4.67%), Brassicaceae (36, 4.67%), Apiaceae (35, 4.54%), Boraginaceae (22, 2.85%), Malvaceae (19, 2.46%), Caryophyllaceae (19, 2.46%), Amaryllidaceae (18, 2.33%), Convolvulaceae (18, 2.33%), Euphorbiaceae (16, 2.07%), Ranunculaceae (16, 2.07%), and Scrophulariaceae (14, 2.33%), as tabulated in (table 2 and figure 3).

Table 2. Percentage of Flora Families

Family	No. of species	Percentage %
Compositae/Asteraceae	112	14.54
Lamiaceae	40	5.19
Pinaceae	3	0.38
Cupressaceae	2	0.25
Fagaceae	3	0.38
Anacardiaceae	6	0.8
Rhamnaceae	8	1.03
Rosaceae	8	1.03
Fabaceae/Leguminosae	109	14.2
Oleaceae	1	0.12
Tamaricaceae	7	0.91
Polygonaceae	4	0.51
Solanaceae	11	1.48
Malvaceae	19	2.5
Capparaceae	3	0.38
Amaranthaceae	36	4.7
Meliaceae	1	0.12
Liliaceae	3	0.38
Resedaceae	3	0.38
Apocynaceae	6	0.8
Tiliaceae	2	0.25
Ephedraceae	2	0.25
Boraginaceae	22	2.9
Simarubaceae	1	0.12
Rubiaceae	8	1.03
Scrophulariaceae	14	1.9
Cymodocaceae	1	0.12
Ruppiaceae	2	0.25
Geraniaceae	6	0.8
Apiaceae	35	4.54
Euphorbiaceae	16	2.07
Zygophyllaceae	6	0.8
Convolvulaceae	18	2.33
Cucurbitaceae	2	0.25
Cistaceae	3	0.38
Brassicaceae	36	4.7
Cyperaceae	8	1.03
Urticaceae	3	0.38
Papaveraceae	10	1.29
Plantaginaceae	10	1.29
Caryophyllaceae	19	2.5
Poaceae	57	7.41
Crassulaceae	4	0.51
Colchicaceae	1	0.12
Juncaceae	3	0.38
Araceae	3	0.38
Asparagaceae	11	1.48

Aristolochiaceae	4	0.51
Xanthorrhoeaceae	6	0.8
Acanthaceae	1	0.12
Pteridaceae	4	0.51
Ranunculaceae	16	2.07
Aizoaceae	2	0.25
Amaryllidaceae	18	2.33
Primulaceae	3	0.38
Phyllanthaceae	2	0.25
Aspleniaceae	2	0.25
Orobanchaceae	3	0.38
Campanulaceae	1	0.12
Menispermaceae	1	0.12
Cynomoriaceae	1	0.12
Onagraceae	1	0.12
Orchidaceae	5	0.64
Moraceae	3	0.38
Frankeniaceae	2	0.25
Cactaceae	3	0.38
Berberidaceae	1	0.12
Plumbaginaceae	1	0.12
Neuradaceae	1	0.12
Nitrariaceae	1	0.12
Total	770	100%

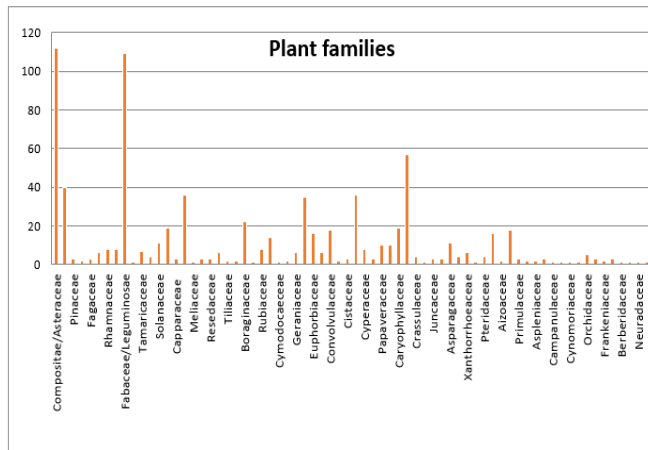


Fig. 3. The Plant Families Studied

B. Life form of the Plants

Plant life-form diagrams are a way of classifying plants rather than the normal scientific classification of species, genera, and families (Du Rietz, 1931). In our study we recorded 770 plant species, of which annual (364, 47.26%), as annual (348, 45.19%), annual vine (15, 1.94%) and annual, parasite, vine (1, 0.12%); hemicryptophytes (157, 20.35%) as (hemicryptophytes (148, 19.22%), hemicryptophytes-Parasite (2, 0.25), hemicryptophytes –annual (3, 0.38), hemicryptophytes-vine (3, 0.38) and hemicryptophytes-Geophyte (1, 0.12); shrubs or chamaephytes (112, 14.05%) of which shrubs, chamaephytes, semi-shrubs (101, 13.11%), chamaephytes-hemicryptophytes (4, 0.51%), chamaephytes -vine (3, 0.38%), chamaephytes geophyte (1, 0.12%), chamaephytes, shrubs-geophytes (1, 0.12%), chamaephytes-annual (1, 0.12%) and chamaephytes, hemicryptophytes, annual (1, 0.12%); tree (36, 4.67%); phanerophyte (34, 4.38%) as phanerophyte (23, 3%), phanerophyte- tree (3, 0.38%), phanerophyte- shrubs (1, 0.12%), phanerophyte shrubs, vine (3, 0.38%), phanerophyte- shrubs-hemicryptophytes (3, 0.38%) and phanerophyte geophyte (1, 12%); geophyte (52, 6.74%) as geophyte (42, 5.45%) and geophyte-vine (10, 1.29); parasite vine (8, 1.03); and helophyte (7, 0.90), in the (table 3 and figure 4).

Table 3. Life form and Spectrum of the Flora

Raunkiaer plant life-form	Number of species	Percentage %
Tree	36	4.67
Phanerophyte	23	3
Phanerophyte- Tree	3	0.38
Phanerophyte- shrubs	1	0.12
Phanerophyte shrubs, vine	3	0.38
Phanerophyte- shrubs- Hemicryptophytes	1	0.12
Phanerophyte -Geophyte	3	0.38
Shrubs, Chamaephytes, semi-shrubs	101	13.11
Chamaephytes-Hemicryptophytes	4	0.51
Chamaephytes –Vine	3	0.38
Chamaephytes-Geophyte	1	0.12
Chamaephytes, Shrubs-Geophytes	1	0.12
Chamaephytes- Annual	1	0.12
Chamaephytes, Hem, Annual	1	0.12
Hemicryptophytes	148	19.24
Hemicryptophytes- Geophyte	1	0.12
Hemicryptophytes-Parasite	2	0.25
Hemicryptophytes -Annual	3	0.38
Hemicryptophytes-Vine	3	0.38
Geophyte	42	5.45
Geophyte Vine	10	1.3
Annual	348	45.2
Annual-Vine	15	2
Annual, parasite, vine	1	0.12
Parasite vine	8	1.03
Helophyte	7	1
Total	770	100%

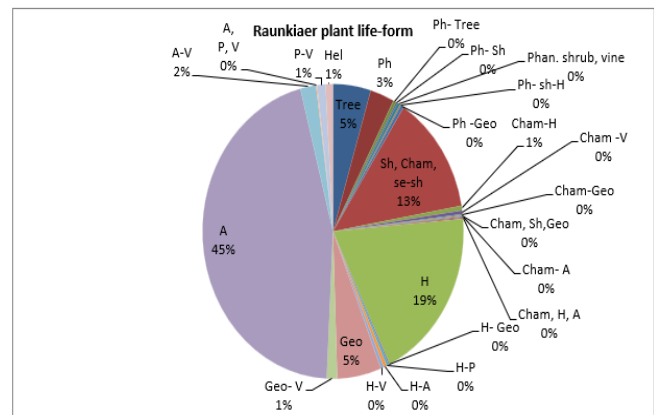


Fig. 4. Raunkiaer Plant Scheme

Furthermore, depending on the geographical distribution of plant species in Al-Dhahiriya, these regions are divided as follows: Irano-Turanian region (Oriental Steppe), Savanna, North African-Eurasian Zone, Saharo-Arabian region, the Sudanese penetration region, and Mediterranean region; and with a different soil type as soil sandy to deep red clay, the arid region includes desert soils, Lysan-Marl soils, and loess areas, while the semi-arid region features Mediterranean steppe soils and dunes (sandstone cemented with calcium carbonate), addition to Rendzina soil.

In addition to that, there are many important studies of plant phytosociological, plant communities have been conducted in southern Palestine, and near Dhahiriya, between 2012 and 2021, including:

- Eight plant groups were identified between 2012-2014, namely: [9]

Pistacio palaestinae - Quercetum lokii*
 Capparido sinaicae - Ceratonietum siliquae
 Cerasus microcarpae-Quercetum ithaburensis*
 Pyro siriaca - Abietetum cilicicae*
 Abio cilicicae - Ceratonietum siliquae
 Periploco aphyllis - Pinetum halepensis
 Cytisopsis pseudocytiso -Tamaricetum tetragynae
 Crataego sinaicae -Tamaricetum jordani.

Three new plant groups were described [21]:

Pino halepensis -Quercetum lookii*
 Pistacio palaestinae -Ceratonietum siliquae*
 Quercus libanii -Tamaricetum palaestinae*

Also, three associations identified in 2020 by Jehad M. H. Ighbareyeh [5], as:

Pistacio lentisci-Quercetum lokii nova. hoc loco
 Ceratonio siliquae-Quercetum callipinii nova. hoc loco
 Pino halepensis-Curessetum sempervirentis nova. hoc loco.
 with three alliances as Pistachio-Quercion lokii, Ceratonio siliquae -Quercion calliprinae and Pino halepensis-Cupression sempervirentis

IV. CONCLUSION

In this study, more than 770 plant species were recorded, eighty-six endemic species, of which 54 are very rare endemic species, and 70 plant families, the most important of which are Compositae or Asteraceae, Fabaceae or Leguminosae, Poaceae, Lamiaceae and Amaranthaceae.

DECLARATION STATEMENT

I must verify the accuracy of the following information as the article's author.

- **Conflicts of Interest/Competing Interests:** Based on my understanding, this article has no conflicts of interest.
- **Funding Support:** This article has not been sponsored or funded by any organization or agency. The independence of this research is a crucial factor in affirming its impartiality, as it has been conducted without any external sway.
- **Ethical Approval and Consent to Participate:** The data provided in this article is exempt from the requirement for ethical approval or participant consent.
- **Data Access Statement and Material Availability:** The adequate resources of this article are publicly accessible.
- **Authors Contributions:** The authorship of this article is contributed solely.

REFERENCES

1. Zohary M (1966). Flora Palaestina Volume II. Israel Academy of Sciences and Humanities, Jerusalem.
2. Zohary M (1972). Flora Palaestina. Part 2, Text Platanaceae to Umbelliferae. Israel Academy of Science and Humanities, Jerusalem 656. <https://doi.org/10.1163/9789004630277>
3. Ighbareyeh JMH, Suliemih, AAA, Sheqwarah M, Cano-Ortiz A, Carmona EC (2022). Flora and Phytosociological of Plant in Al-Dawaimah of Palestine. Research Journal of Ecology and Environmental Sciences 2(1), 58–91. Retrieved from <https://www.scipublications.com/journal/index.php/rjees/article/view/202> <https://doi.org/10.31586/rjees.2022.202>
4. Ighbareyeh JMH, Cano-Ortiz A, Cano E (2022a). Phytosociology and Vegetation of Plants of Beit Jibrin in Palestine. Land, 11, 264. <https://doi.org/10.3390/land11020264>
5. Ighbareyeh J, Carmona E (2018). A Phytosociological of Plant Communities and Biodiversity in the East-South of Idna Village-Hebron of Palestine. International Journal of Geosciences 9, 44-58. <https://doi.org/10.4236/ijg.2018.91003>

6. Palestinian Central Bureau of Statistics (PCBS) and the Environment Quality Authority Press Release on International Day for Biological Diversity: "Island Biodiversity" Mayo, on 22, (2014). <https://www.pcbs.gov.ps/post.aspx?lang=en&ItemID=1124>
7. Ighbareyeh J, Cano-Ortiz A, Carmona E, Suliemih A, Ighbareyeh M (2017). Flora Endemic Rare and Bioclimate of Palestine. Open Access Library Journal 4, 1-14. <https://doi.org/10.4236/oalib.1103977>
8. Ighbareyeh JMH, Cano-Ortiz A, Cano E (2021). Endemic plant species in the west of Hebron, Palestine. European Journal of Applied Sciences 9 (3). 368-385. <https://doi.org/10.14738/ajvp.93.10175>
9. Ighbareyeh JMH, Cano-Ortiz A, Suliemih AAA, Ighbareyeh MMH, and Cano E (2014). Phytosociology with Other Characteristics Biologically and Ecologically of Plants in Palestine. American Journal of Plant Sciences 5, 3104-3118. <https://doi.org/10.4236/ajps.2014.520327>
10. Katja Tielbörger (1997). The vegetation of linear desert dunes in the north-western Negev, Israel, Flora Volume 192, Issue 3, Pages 261-278, ISSN 0367-2530, [https://doi.org/10.1016/S0367-2530\(17\)30792-2](https://doi.org/10.1016/S0367-2530(17)30792-2)
11. Danin A (1986). Flora and vegetation of Sinai. Proceedings of the Royal Society of Edinburgh. Section B. Biological Sciences 89, 159-168. <https://doi.org/10.1017/S026972700000899X>
12. Danin A (2004). The inclusion of adventive plants in the second edition of Flora Palaestina Willdenowia 30, 305–314. <https://doi.org/10.3372/wi.30.30209>
13. Danin A (2004a). Distribution Atlas of Plants in Flora Palaestina Area, 2nd ed.; Academy of Science and Humanities: Jerusalem, Israel p. 520. ISBN 9652081671.
14. Danin A, and Feinbrun-Dothan N (1991). Analytical Flora of Eretz-Israel; CANA Publishing House Ltd.: Jerusalem, Israel.
15. El Hadidi MN, Hosni HA (1996). Biodiversity in the flora of Egypt. In: van der Maesen LJG, van der Burgt XM, van Medenbach de Rooy JM (eds) The Biodiversity of African Plants. Springer, Dordrecht. https://doi.org/10.1007/978-94-009-0285-5_101
16. Dothan FN (1978). Flora Palaestina, Part Three, Text Ericaceae to Compositae; Israel Academy of Science and Humanities: Jerusalem, Israel p. 481.
17. Dothan FN (1986). Flora Palaestina, Part Four Plates, Text Alismaceae to Orchidaceae; Academy of Science and Humanities: Jerusalem, Israel, p. 525.
18. Chneeweiss Gerald M, Asgarpour Zahra, Moser Dietmar, Mahmoodi Mohammad, Sherafati Mahbubeh, Zare Golshan, Noroozi Jalil (2019). "Patterns of Endemism in Turkey, the Meeting Point of Three Global Biodiversity Hotspots, Based on Three Diverse Families of Vascular Plants". Frontiers in Ecology and Evolution. 7. doi:10.3389/fevo.2019.00159. ISSN 2296-701X <https://doi.org/10.3389/fevo.2019.00159>
19. Carmelo Maria Musarella, Salvatore Brullo, Gianpietro Giusso del Galdo (2020). "Contribution to the Orophilous Cushion-Like Vegetation of Central-Southern and Insular Greece". Plants 9(12), pg. 1678, <https://doi.org/10.3390/plants9121678>
20. Maria Panitsa, Panayiotis Trigas, Dimitrios Kontakos et al. (2021). "Natural and cultural heritage interaction: aspects of plant diversity in three East Peloponnesian castles (Greece) and conservation evaluation", Plant Biosystems -An International Journal Dealing with all Aspects of Plant Biology p. 1; <https://doi.org/10.1080/11263504.2021.1889701>
21. Jehad MH Ighbareyeh, Suliemih AAA, Abu-Ayash AM, Sheqwarah MN, Cano-Ortiz A, Cano-Carmona E (2021). Biodiversity and Phytosociological Analysis of Plants in Wadi Al-Quf Nursery Reserve North - Western of Hebron City in Palestine. Journal of Plant Sciences, Vol. 9, No. 1, pp. 13-24. <https://doi.org/10.11648/j.jps.20210901.13>
22. Ighbareyeh JMH (2024). Pear Production (Pyrus communis L.) in Jerusalem, Palestine. Asian Journal of Biology 20(5), 1–11. <https://doi.org/10.9734/ajob/2024/v20i5401>.
23. Pringle Denys (1997). Secular buildings in the Crusader Kingdom of Jerusalem: an archaeological Gazetteer. Cambridge University Press. ISBN 0521-46010-7.
24. Braun-Blanquet J (1979). Fitosociología. Bases para el estudio de las comunidades vegetales. Blume, Madrid p. 820.

25. Van Der Maarel E (1979). Transformation of Cover-Abundance Values in Phytosociology and Its Effects on Community Similarity. *Vegetation* 39, 97-114. <https://doi.org/10.1007/BF00052021>
26. Ali-Shtayeh MS, Jamous RM (2018). Updating the plant “Red List” of Palestine (West Bank and Gaza strip): Conservation assessment and recommendations. *J. Biodivers Endanger species* 6: 224.
27. Ali-Shtayeh MS, Salah Ayman MA, Jamous RM (2003). Ecology of hymexazolin sensitive Pythium species in field soils. *Mycopathologia* 156: 333-342. <https://doi.org/10.1023/B:MYCO.0000003561.47451.f7>
28. Gangadharan, K., Kumari, G. R. N., & Dhanasekaran, D. (2019). Classification and Functional Analysis of Major Plant Disease using Various Classifiers in Leaf Images. In *International Journal of Innovative Technology and Exploring Engineering* (Vol. 9, Issue 2, pp. 4240-4248). <https://doi.org/10.35940/ijitee.b6332.129219>
29. R, R., & S H, M. (2021). Plant Disease Detection and Classification using CNN. In *International Journal of Recent Technology and Engineering* (IJRTE) (Vol. 10, Issue 3, pp. 152-156). <https://doi.org/10.35940/ijrte.c6458.0910321>
30. V., G., Dr., CK, G., Dr., Reddy, Y. P., Ms., & V., H., Ms. (2021). The Weed Plant Detection. In *International Journal of Engineering and Advanced Technology* (Vol. 10, Issue 4, pp. 206-209). <https://doi.org/10.35940/ijeat.d2454.0410421>
31. E.L. Pankratov. (2024). On Prognosis of Growth of Plants During Control by Lighting. In *Indian Journal of Advanced Botany* (Vol. 4, Issue 1, pp. 1-3). <https://doi.org/10.54105/ijab.a1026.04010424>

AUTHOR PROFILE



Jehad M. H. Ighbareyeh, is an Assistant Professor in Botany, holds a Ph.D. degree in Botany-Sciences (2014), a master's degree in “Biotechnology and biomedicine” (2013), a master's degree in “Olive Growing, Olive Oil and Health” (2011) at the Faculty of Experimental Sciences, University of Jaen, Spain, and Bachelor's degree in “Plant Production and Protection” (2003), Faculty of Agriculture, Hebron University, Hebron, Palestine. Published many papers scientific in prestigious scientific journals, some other books, seminars, and various scientific workshops. He is an arbitrator, reviewer, and Editorial board member to several prestigious international Journals in the world. Currently works at the Department of Plant Production and Protection, Faculty of Agriculture, and Faculty of Technology and Applied Sciences, Al-Quds Open University, Hebron Branch, Hebron, Palestine, and researcher at the Department of Animal, Plant Biology and Ecology, Faculty of Experimental Sciences, University of Jaen, Spain, and Lecturer at many Palestinian universities. Jehad Ighbareyeh does research in Systematics (Taxonomy), Flora, Botany, Ecology, climate change, Biology, Biotechnology and Biomedicine. A main investigator for some national and international research” as ERASMUS. Director of a group of researchers at Al-Quds Open University - Faculty of Agriculture - Hebron branch, Hebron, Palestine, with the cooperation of the University of Jaen, Jaen, Spain. Jehad has many scientific papers and books published in prestigious international scientific journals and has participated in many scientific conferences, workshops, seminars, various scientific visits, and academic exchanges between international universities.

Disclaimer/Publisher’s Note: The statements, opinions and data contained in all publications are solely those of the individual author(s) and contributor(s) and not of the Lattice Science Publication (LSP)/ journal and/ or the editor(s). The Lattice Science Publication (LSP)/ journal and/or the editor(s) disclaim responsibility for any injury to people or property resulting from any ideas, methods, instructions or products referred to in the content.